



**Water Monitoring Result at C7 - Windsor House
Mid-Flood Tide**

Date	Time	Weather Condition	Sampling Depth m	Water Temperature °C		pH -		Salinity ppt		DO Saturation %		DO mg/L		Turbidity NTU		Suspended Solids mg/L								
				Value	Average	Value	Average	Value	Average	Value	Average	Value	Average	Value	Average	Value	Average							
28/9/2015	18:50	Sunny	Middle	-	27.90	27.90	27.90	7.83	7.86	7.89	30.61	30.61	30.74	71.3	72.5	71.4	4.71	4.79	4.69	7.96	7.99	7.90	6	6.00
	18:51		Middle	-	27.90	27.90	27.90	7.94	7.94	7.89	30.87	30.87	30.74	71.0	70.7	71.4	4.69	4.58	4.69	7.87	7.76	7.90	6	6.00
30/9/2015	18:30	Cloudy	Middle	-	29.40	29.40	29.40	8.15	8.15	8.15	31.63	31.63	31.63	70.2	69.7	69.5	4.50	4.47	4.45	4.27	4.01	4.05	4	5.00
	18:31		Middle	-	29.40	29.40	29.40	8.15	8.16	8.15	31.62	31.63	31.63	68.9	69.0	69.5	4.41	4.42	4.45	3.91	3.99	4.05	6	5.00

Remarks:
Single underline denotes exceedance over Action Level.
Double underline denotes exceedance over Limit Level.



**Water Monitoring Result at C7 - Windsor House
Mid-Flood Tide**

Date	Time	Weather Condition	Sampling Depth m	Water Temperature °C		pH -		Salinity ppt		DO Saturation %		DO mg/L		Turbidity NTU		Suspended Solids mg/L								
				Value	Average	Value	Average	Value	Average	Value	Average	Value	Average	Value	Average	Value	Average							
2/10/2015	10:40	Fine	Middle	-	29.10	29.10	29.10	8.11	8.11	8.13	30.43	30.43	30.43	76.1	76.3	76.1	4.92	4.95	4.94	5.72	5.67	5.70	6	5.50
	10:42		Middle	-	29.10	29.10	29.10	8.14	8.14	8.13	30.43	30.43	30.43	77.4	74.7	76.1	5.02	4.85	4.94	5.65	5.75	5.70	5	5.50
6/10/2015	12:20	Cloudy	Middle	-	27.90	27.90	27.90	8.15	8.15	8.17	31.29	31.29	31.32	70.6	71.3	71.1	4.65	4.70	4.69	4.29	4.28	4.30	4	4.00
	12:22		Middle	-	27.90	27.90	27.90	8.18	8.18	8.17	31.34	31.34	31.32	71.4	71.1	71.1	4.70	4.69	4.69	4.29	4.32	4.30	4	4.00
8/10/2015	16:50	Fine	Middle	-	29.10	29.10	29.15	8.19	8.19	8.19	30.65	30.65	30.65	74.2	74.0	73.4	4.80	4.79	4.75	6.66	6.55	6.52	5	5.00
	16:52		Middle	-	29.20	29.20	29.15	8.19	8.19	8.19	30.65	30.65	30.65	72.7	72.6	73.4	4.71	4.70	4.75	6.43	6.44	6.52	5	5.00
10/10/2015	17:30	Cloudy	Middle	-	27.90	27.90	27.85	8.17	8.17	8.18	31.44	31.44	31.45	75.3	75.8	73.9	4.98	4.99	4.88	12.50	12.52	12.37	9	8.00
	17:32		Middle	-	27.80	27.80	27.85	8.18	8.18	8.18	31.45	31.45	31.45	72.8	71.7	73.9	4.80	4.73	4.88	12.25	12.22	12.37	7	8.00
12/10/2015	16:50	Cloudy	Middle	-	27.20	27.20	27.10	8.22	8.22	8.22	31.70	31.70	31.71	76.0	77.1	76.5	5.06	5.14	5.10	3.82	3.89	3.89	2	2.00
	16:52		Middle	-	27.00	27.00	27.10	8.22	8.22	8.22	31.72	31.72	31.71	76.4	76.4	76.5	5.09	5.09	5.10	3.92	3.93	3.89	2	2.00
14/10/2015	18:48	Fine	Middle	-	26.60	26.60	26.55	8.18	8.18	8.19	32.28	32.28	32.29	75.1	75.7	75.3	5.04	5.08	5.04	5.10	5.51	5.21	3	2.50
	18:49		Middle	-	26.50	26.50	26.55	8.19	8.19	8.19	32.29	32.29	32.29	75.3	75.0	75.3	5.04	4.99	5.04	5.08	5.13	5.21	2	2.50
16/10/2015	15:10	Fine	Middle	-	28.10	28.10	28.15	8.05	8.05	8.17	31.51	31.51	31.51	78.1	78.0	78.4	5.11	5.11	5.13	4.70	4.71	4.71	3	2.50
	15:12		Middle	-	28.20	28.20	28.15	8.28	8.28	8.17	31.50	31.50	31.51	78.5	79.0	78.4	5.14	5.17	5.13	4.71	4.70	4.71	2	2.50
20/10/2015	11:45	Fine	Middle	-	27.90	27.90	27.95	8.24	8.24	8.24	31.60	31.60	31.47	86.3	86.1	86.8	5.67	5.65	5.70	5.25	5.23	5.23	7	6.00
	11:47		Middle	-	28.00	28.00	27.95	8.23	8.23	8.24	31.34	31.34	31.47	88.4	86.5	86.8	5.80	5.67	5.70	5.22	5.20	5.23	5	6.00
22/10/2015	14:45	Fine	Middle	-	28.10	28.10	28.10	8.11	8.11	8.13	31.82	31.82	31.84	78.1	81.9	80.7	5.11	5.36	5.28	5.20	5.20	5.20	4	3.50
	14:47		Middle	-	28.10	28.10	28.10	8.15	8.15	8.13	31.85	31.85	31.84	80.4	82.2	80.7	5.26	5.37	5.28	5.21	5.20	5.20	3	3.50
24/10/2015	16:30	Fine	Middle	-	28.20	28.20	28.25	8.17	8.17	8.19	31.86	31.86	31.86	85.8	86.6	85.2	5.60	5.65	5.56	6.45	6.46	6.36	7	6.50
	16:32		Middle	-	28.30	28.30	28.25	8.21	8.21	8.19	31.85	31.85	31.86	84.8	83.5	85.2	5.53	5.45	5.56	6.27	6.27	6.36	6	6.50
26/10/2015	17:30	Fine	Middle	-	26.70	26.70	26.60	8.15	8.15	8.20	32.16	32.16	32.19	83.7	84.3	84.8	5.61	5.65	5.56	5.44	5.43	5.44	2	2.00
	17:32		Middle	-	26.50	26.50	26.60	8.25	8.25	8.20	32.21	32.21	32.19	84.7	86.6	84.8	5.68	5.31	5.56	5.45	5.45	5.44	2	2.00

Remarks:
Single underline denotes exceedance over Action Level.
Double underline denotes exceedance over Limit Level.



**Water Monitoring Result at C1 - HKCEC Extension
Mid-Flood Tide**

Date	Time	Weather Condition	Sampling Depth m		Water Temperature °C			pH -			Salinity ppt			DO Saturation %		DO mg/L		Turbidity NTU		Suspended Solids mg/L				
					Value	Average	Value	Average	Value	Average	Value	Average	Value	Average	Value	Average	Value	Average	Value	Average	Value	Average		
28/9/2015	17:53	Sunny	Middle	2.0	28.50	28.50	28.50	8.29	8.29	8.29	31.01	31.01	31.01	67.0	66.8	66.1	4.38	4.36	4.32	8.50	8.28	8.41	12	12.00
	17:54		Middle	2.0	28.50	28.50		8.29	8.29		31.01	31.01		65.5	64.9		4.28	4.24		8.52	8.33		12	
30/9/2015	17:32	Cloudy	Middle	2.5	29.40	29.40	29.35	8.24	8.24	8.24	30.61	30.61	30.61	74.7	72.8	72.4	4.82	4.70	4.67	5.30	5.33	5.32	6	6.00
	17:34		Middle	2.5	29.30	29.30		8.24	8.24		30.61	30.61		71.9	70.0		4.64	4.52		5.31	5.32		6	

Remarks:
Single underline denotes exceedance over Action Level.
Double underline denotes exceedance over Limit Level.



**Water Monitoring Result at C1 - HKCEC Extension
Mid-Flood Tide**

Date	Time	Weather Condition	Sampling Depth		Water Temperature			pH			Salinity			DO Saturation		DO		Turbidity		Suspended Solids				
			m		°C		-		ppt		%		mg/L		NTU		mg/L							
					Value	Average	Value	Average	Value	Average	Value	Average	Value	Average	Value	Average	Value	Average						
2/10/2015	10:06	Fine	Middle	2.5	28.50	28.50	28.50	8.26	8.26	8.27	31.03	31.03	31.03	71.4	72.3	72.5	4.67	4.72	4.74	13.76	14.04	13.38	16	<u>17.00</u>
	10:08		Middle	2.5	28.50	28.50		8.27	8.27		31.03	31.03		73.6	72.6		4.81	4.74		12.86	12.84		18	
6/10/2015	16:01	Cloudy	Middle	2.5	27.90	27.90	27.90	8.32	8.32	8.32	31.75	31.75	114.26	72.8	73.5	72.5	4.78	4.83	4.77	9.60	9.61	<u>9.65</u>	6	6.00
	16:03		Middle	2.5	27.90	27.90		8.32	8.32		31.76	361.76		72.7	71.1		4.78	4.67		9.69	9.70		6	
8/10/2015	15:24	Fine	Middle	2.5	28.50	28.50	28.55	8.19	8.19	8.21	31.48	31.48	31.47	70.7	71.9	71.4	4.60	4.68	4.64	12.22	12.15	<u>12.07</u>	9	9.00
	15:26		Middle	2.5	28.60	28.60		8.22	8.22		31.45	31.45		72.0	70.9		4.68	4.58		11.97	11.95		9	
10/10/2015	16:25	Cloudy	Middle	2.5	27.50	27.50	27.50	8.27	8.27	8.28	31.71	31.71	31.71	69.0	66.7	68.0	4.56	4.41	4.50	7.00	7.02	7.02	7	7.00
	16:27		Middle	2.5	27.50	27.50		8.28	8.28		31.71	31.71		67.9	68.3		4.49	4.52		7.02	7.03		7	
12/10/2015	18:30	Cloudy	Middle	2.5	26.20	26.20	26.20	8.29	8.29	8.29	32.14	32.14	32.15	81.1	80.7	81.7	5.41	5.44	5.49	15.66	15.45	<u>15.41</u>	11	11.50
	18:32		Middle	2.5	26.20	26.20		8.29	8.29		32.15	32.15		82.6	82.2		5.57	5.53		15.44	15.10		12	
14/10/2015	17:03	Fine	Middle	2.5	26.80	26.80	26.80	8.30	8.30	8.30	32.29	32.29	32.29	67.0	67.5	67.4	4.47	4.50	4.50	9.62	9.52	<u>9.52</u>	6	6.00
	17:05		Middle	2.5	26.80	26.80		8.30	8.30		32.29	32.29		67.9	67.2		4.52	4.49		9.48	9.45		6	
16/10/2015	14:30	Fine	Middle	3.0	27.80	27.80	27.70	8.26	8.26	8.26	32.13	32.13	32.13	78.8	78.1	77.7	5.14	5.13	5.09	7.87	7.90	7.92	7	6.00
	14:32		Middle	3.0	27.60	27.60		8.26	8.26		32.13	32.13		77.4	76.3		5.08	5.01		7.93	7.96		5	
20/10/2015	14:51	Fine	Middle	2.5	27.00	27.00	27.00	8.27	8.27	8.27	32.23	32.23	32.23	69.7	69.8	69.2	4.64	4.65	4.61	6.88	6.72	6.78	4	4.00
	14:53		Middle	2.5	27.00	27.00		8.27	8.27		32.23	32.23		70.2	67.2		4.67	4.48		6.75	6.76		4	
22/10/2015	14:02	Fine	Middle	2.5	27.50	27.50	27.50	8.25	8.25	8.26	31.52	31.52	31.77	70.8	69.5	69.0	4.68	4.59	4.56	5.65	5.55	5.51	3	4.00
	14:04		Middle	2.5	27.50	27.50		8.26	8.26		32.01	32.01		68.7	66.9		4.54	4.42		5.50	5.33		5	
24/10/2015	15:40	Fine	Middle	2.5	27.40	27.40	20.55	8.34	8.34	8.34	31.98	31.98	31.98	86.2	88.0	87.4	5.71	5.82	5.78	5.78	5.79	5.81	6	5.00
	15:42		Middle	2.5	0.00	27.40		8.34	8.34		31.98	31.98		87.7	87.6		5.80	5.79		5.81	5.84		4	
26/10/2015	16:06	Fine	Middle	2.5	27.00	27.00	27.00	8.35	8.35	8.35	32.21	32.21	32.21	73.2	73.3	73.5	4.83	4.88	4.89	6.53	6.53	6.53	4	3.00
	16:08		Middle	2.5	27.00	27.00		8.35	8.35		32.21	32.21		73.9	73.7		4.92	4.91		6.53	6.51		2	

Remarks:
Single underline denotes exceedance over Action Level.
Double underline denotes exceedance over Limit Level.



**Water Monitoring Result at P1 - HKCEC Phase I
Mid-Flood Tide**

Date	Time	Weather Condition	Sampling Depth		Water Temperature		pH		Salinity		DO Saturation		DO		Turbidity		Suspended Solids							
					°C		-		ppt		%		mg/L		NTU		mg/L							
			m	Value	Average	Value	Average	Value	Average	Value	Average	Value	Average	Value	Average	Value	Average	Value	Average					
28/9/2015	17:30	Sunny	Middle	2.0	28.80	28.80	28.80	8.28	8.28	8.28	31.06	31.06	31.06	69.4	69.6	70.0	4.51	4.53	4.55	8.67	8.74	8.66	6	6.00
	17:31		Middle	2.0	28.80	28.80	28.80	8.27	8.27	8.28	31.06	31.06	31.06	70.3	70.5	70.0	4.57	4.59	4.55	8.58	8.64	8.66	6	6.00
30/9/2015	17:16	Cloudy	Middle	2.5	29.30	29.30	29.35	8.07	8.07	8.11	30.32	30.32	30.33	80.8	83.9	80.7	5.23	5.30	5.19	6.82	6.89	6.93	4	4.00
	17:18		Middle	2.5	29.40	29.40	29.35	8.15	8.15	8.11	30.33	30.33	30.33	79.2	78.9	80.7	5.12	5.11	5.19	6.93	7.06	6.93	4	4.00

Remarks:
 Single underline denotes exceedance over Action Level.
 Double underline denotes exceedance over Limit Level.



**Water Monitoring Result at P1 - HKCEC Phase I
Mid-Flood Tide**

Date	Time	Weather Condition	Sampling Depth		Water Temperature			pH			Salinity			DO Saturation		DO		Turbidity		Suspended Solids				
			m		°C		-		ppt		%		mg/L		NTU		mg/L							
					Value	Average	Value	Average	Value	Average	Value	Average	Value	Average	Value	Average	Value	Average						
2/10/2015	9:50	Fine	Middle	2.5	28.60	28.60	28.60	8.19	8.19	8.21	30.80	30.80	30.80	65.8	63.1	62.9	4.30	4.12	4.11	13.30	13.00	13.01	12	12.00
	9:52		Middle	2.5	28.60	28.60	28.60	8.22	8.22	8.21	30.80	30.80	30.80	61.7	61.0	62.9	4.03	3.99	4.11	12.88	12.84	13.01	12	
6/10/2015	15:45	Cloudy	Middle	2.5	27.70	27.70	27.70	8.22	8.22	8.24	31.76	31.76	31.77	71.5	70.9	70.7	4.72	4.68	4.66	10.78	10.81	<u>10.81</u>	6	6.50
	15:47		Middle	2.5	27.70	27.70	27.70	8.26	8.26	8.24	31.77	31.77	31.77	70.2	70.0	70.7	4.63	4.62	4.66	10.82	10.83	<u>10.81</u>	7	
8/10/2015	15:28	Fine	Middle	2.5	28.50	28.50	28.50	8.23	8.23	8.23	31.04	31.04	31.04	65.1	64.7	64.8	4.26	4.23	4.23	7.68	7.65	7.63	4	4.00
	15:30		Middle	2.5	28.50	28.50	28.50	8.23	8.23	8.23	31.04	31.04	31.04	64.8	64.4	64.8	4.22	4.21	4.23	7.61	7.59	7.63	4	
10/10/2015	16:09	Cloudy	Middle	2.5	27.20	27.20	27.20	8.29	8.29	8.30	31.70	31.70	31.71	75.7	74.8	75.7	5.03	4.97	4.98	8.58	8.57	8.57	8	8.00
	16:11		Middle	2.5	27.20	27.20	27.20	8.30	8.30	8.30	31.72	31.72	31.71	74.1	78.0	75.7	4.93	4.98	4.98	8.56	8.55	8.57	8	
12/10/2015	18:07	Cloudy	Middle	2.5	25.90	25.90	25.90	8.14	8.14	8.17	32.19	32.19	32.20	70.3	70.0	69.4	4.76	4.75	4.71	2.67	2.67	2.66	7	7.50
	18:09		Middle	2.5	25.90	25.90	25.90	8.20	8.20	8.17	32.20	32.20	32.20	69.2	68.0	69.4	4.69	4.62	4.71	2.69	2.62	2.66	8	
14/10/2015	16:47	Fine	Middle	2.5	26.30	26.30	26.30	8.22	8.22	8.24	32.39	32.39	32.36	78.2	74.4	74.7	5.26	5.00	5.03	9.76	9.77	<u>9.64</u>	7	6.00
	16:49		Middle	2.5	26.30	26.30	26.30	8.26	8.26	8.24	32.28	32.38	32.36	73.6	72.7	74.7	4.95	4.89	5.03	9.55	9.49	<u>9.64</u>	5	
16/10/2015	14:10	Fine	Middle	3.0	28.10	28.10	28.20	8.22	8.22	8.23	32.13	32.13	32.13	81.9	82.3	82.1	5.35	5.37	5.36	9.12	9.11	<u>9.12</u>	6	5.50
	14:12		Middle	3.0	28.30	28.30	28.20	8.24	8.24	8.23	32.12	32.12	32.13	81.8	82.4	82.1	5.34	5.37	5.36	9.11	9.12	<u>9.12</u>	5	
20/10/2015	14:35	Fine	Middle	2.5	27.80	27.80	27.90	8.15	8.15	8.18	32.17	32.17	32.15	78.5	77.1	78.5	5.15	5.05	5.14	7.15	7.12	7.10	4	5.00
	14:37		Middle	2.5	28.00	28.00	27.90	8.20	8.20	8.18	32.13	32.13	32.15	77.5	80.8	78.5	5.08	5.28	5.14	7.07	7.05	7.10	6	
22/10/2015	13:46	Fine	Middle	2.5	28.30	28.30	28.50	8.28	8.28	8.28	32.04	32.04	32.06	72.0	71.1	71.9	4.67	4.62	4.67	3.43	3.60	3.55	3	3.00
	13:48		Middle	2.5	28.70	28.70	28.50	8.28	8.28	8.28	32.07	32.07	32.06	70.6	74.0	71.9	4.58	4.80	4.67	3.62	3.56	3.55	3	
24/10/2015	15:20	Fine	Middle	2.5	28.20	28.20	28.25	8.30	8.30	8.31	31.97	31.97	31.97	90.4	92.7	92.1	5.90	6.05	6.01	5.48	5.65	5.55	4	4.50
	15:22		Middle	2.5	28.30	28.30	28.25	8.32	8.32	8.31	31.97	31.97	31.97	92.7	92.7	92.1	6.05	6.04	6.01	5.54	5.51	5.55	5	
26/10/2015	15:50	Fine	Middle	2.5	26.70	26.70	26.70	8.24	8.24	8.27	31.81	31.81	31.87	73.4	74.0	74.4	4.92	4.95	4.99	6.13	6.07	6.08	4	5.00
	15:52		Middle	2.5	26.70	26.70	26.70	8.29	8.29	8.27	31.93	31.93	31.87	75.1	75.2	74.4	5.03	5.04	4.99	6.07	6.05	6.08	6	

Remarks:
Single underline denotes exceedance over Action Level.
Double underline denotes exceedance over Limit Level.



**Water Monitoring Result at P3 - APA
Mid-Flood Tide**

Date	Time	Weather Condition	Sampling Depth m		Water Temperature °C			pH -			Salinity ppt			DO Saturation %		DO mg/L		Turbidity NTU		Suspended Solids mg/L				
					Value	Average	Value	Average	Value	Average	Value	Average	Value	Average	Value	Average	Value	Average	Value	Average	Value	Average		
28/9/2015	17:37	Sunny	Middle	2.0	28.60	28.60	28.60	8.27	8.27	8.27	31.02	31.02	31.03	68.0	70.9	69.5	4.43	4.61	4.53	9.91	9.52	9.62	13	12.50
	17:38		Middle	2.0	28.60	28.60		8.27	8.27		31.03	31.03		68.6	70.4		4.47	4.59		9.38	9.66		12	
30/9/2015	17:20	Cloudy	Middle	2.5	29.30	29.30	29.10	8.17	8.17	8.18	30.45	30.45	30.45	78.5	78.7	78.1	5.11	5.12	5.08	4.70	4.81	4.81	2	3.00
	17:22		Middle	2.5	28.90	28.90		8.19	8.19		30.45	30.45		78.0	77.1		5.07	5.02		4.83	4.88		4	

Remarks:
Single underline denotes exceedance over Action Level.
Double underline denotes exceedance over Limit Level.



**Water Monitoring Result at P3 - APA
Mid-Flood Tide**

Date	Time	Weather Condition	Sampling Depth		Water Temperature			pH			Salinity			DO Saturation		DO		Turbidity		Suspended Solids				
			m		°C		-		ppt		%		mg/L		NTU		mg/L							
					Value	Average	Value	Average	Value	Average	Value	Average	Value	Average	Value	Average	Value	Average						
2/10/2015	9:54	Fine	Middle	2.5	28.20	28.20	28.25	8.23	8.23	8.23	29.42	29.42	29.41	73.0	71.8	71.4	4.84	4.76	4.74	9.66	9.45	9.49	13	13.50
	9:56		Middle	2.5	28.30	28.30		8.23	8.23		29.39	29.39		70.6	70.1		4.69	4.65		9.43	9.43		14	
6/10/2015	15:49	Cloudy	Middle	2.5	27.60	27.60	27.60	8.28	8.28	8.29	31.87	31.87	31.87	67.4	66.4	66.7	4.45	4.38	4.40	9.79	9.70	<u>9.77</u>	6	5.50
	15:51		Middle	2.5	27.60	27.60		8.29	8.29		31.87	31.87		66.2	66.9		4.36	4.41		9.77	9.80		5	
8/10/2015	15:32	Fine	Middle	2.5	28.10	28.10	28.10	8.23	8.23	8.23	31.22	31.22	31.22	68.1	66.3	65.2	4.47	4.35	4.28	7.77	7.66	7.66	5	5.00
	15:34		Middle	2.5	28.10	28.10		8.22	8.22		31.21	31.21		64.0	62.4		4.20	4.10		7.62	7.60		5	
10/10/2015	16:13	Cloudy	Middle	2.5	27.20	27.20	27.20	8.30	8.30	8.30	31.70	31.70	31.72	72.0	71.9	72.2	4.79	4.78	4.80	7.32	7.30	7.23	6	6.00
	16:15		Middle	2.5	27.20	27.20		8.29	8.29		31.73	31.73		72.4	72.5		4.81	4.82		7.16	7.14		6	
12/10/2015	18:11	Cloudy	Middle	2.5	25.80	25.80	25.80	8.23	8.23	8.24	31.91	31.91	32.03	64.3	63.9	65.6	4.36	4.34	4.45	10.59	10.22	<u>10.24</u>	7	6.50
	18:13		Middle	2.5	25.80	25.80		8.25	8.25		32.15	32.15		65.7	68.3		4.46	4.63		10.00	10.13		6	
14/10/2015	16:51	Fine	Middle	2.5	26.30	26.30	26.30	8.28	8.28	8.29	32.36	32.36	32.37	69.0	67.3	66.8	4.63	4.52	4.49	9.34	9.22	<u>9.23</u>	6	5.50
	16:53		Middle	2.5	26.30	26.30		8.29	8.29		32.37	32.37		65.9	65.1		4.43	4.37		9.19	9.16		5	
16/10/2015	14:15	Fine	Middle	3.0	27.80	27.80	27.75	8.25	8.25	8.25	32.11	32.11	32.11	77.6	81.4	80.5	5.11	5.36	5.30	10.93	10.90	<u>10.89</u>	7	7.00
	14:17		Middle	3.0	27.70	27.70		8.25	8.25		32.11	32.11		81.0	82.0		5.33	5.40		10.99	10.75		7	
20/10/2015	14:39	Fine	Middle	2.5	27.10	27.10	27.15	8.23	8.23	8.24	32.16	32.16	32.12	77.0	76.0	75.8	5.12	5.03	5.01	5.52	5.50	5.50	4	4.00
	14:41		Middle	2.5	27.20	27.20		8.24	8.24		32.08	32.08		75.7	74.5		5.03	4.85		5.49	5.48		4	
22/10/2015	13:50	Fine	Middle	2.5	27.80	27.80	27.85	8.27	8.27	8.28	32.13	32.13	32.13	80.1	80.3	79.7	5.25	5.27	5.23	4.61	4.59	4.63	3	2.50
	13:52		Middle	2.5	27.90	27.90		8.28	8.28		32.13	32.13		80.0	78.2		5.25	5.13		4.59	4.71		2	
24/10/2015	15:25	Fine	Middle	2.5	27.40	27.40	27.45	8.32	8.32	8.33	31.96	31.96	31.96	88.7	88.0	87.9	5.87	5.82	5.81	4.39	4.41	4.34	4	3.50
	15:27		Middle	2.5	27.50	27.50		8.33	8.33		31.96	31.96		88.3	86.5		5.84	5.72		4.30	4.26		3	
26/10/2015	15:54	Fine	Middle	2.5	26.60	26.60	26.65	8.30	8.30	8.31	32.05	32.08	32.13	80.0	78.9	79.6	5.36	5.28	5.33	6.27	5.84	5.94	3	4.00
	15:56		Middle	2.5	26.70	26.70		8.32	8.32		32.19	32.19		79.5	79.9		5.32	5.35		5.84	5.80		5	

Remarks:
Single underline denotes exceedance over Action Level.
Double underline denotes exceedance over Limit Level.



**Water Monitoring Result at P4 - SOC
Mid-Flood Tide**

Date	Time	Weather Condition	Sampling Depth m		Water Temperature °C			pH -			Salinity ppt			DO Saturation %		DO mg/L		Turbidity NTU		Suspended Solids mg/L				
					Value	Average	Value	Average	Value	Average	Value	Average	Value	Average	Value	Average	Value	Average	Value	Average	Value	Average		
28/9/2015	17:43	Sunny	Middle	2.0	28.60	28.60	28.60	8.28	8.28	8.28	31.01	31.01	31.02	73.3	74.5	73.8	4.78	4.84	4.81	9.21	8.86	9.03	11	10.50
	17:44		Middle	2.0	28.60	28.60		8.28	8.28		31.02	31.02		73.5	73.7		4.80	4.81		9.07	8.96		10	
30/9/2015	17:24	Cloudy	Middle	2.5	29.20	29.20	29.20	8.20	8.20	8.21	30.52	30.52	30.53	77.9	75.6	75.8	5.04	4.97	4.93	6.29	6.19	6.13	7	6.50
	17:26		Middle	2.5	29.20	29.20		8.22	8.22		30.54	30.54		74.7	75.0		4.84	4.85		6.01	6.01		6	

Remarks:
Single underline denotes exceedance over Action Level.
Double underline denotes exceedance over Limit Level.



**Water Monitoring Result at P4 - SOC
Mid-Flood Tide**

Date	Time	Weather Condition	Sampling Depth		Water Temperature			pH			Salinity			DO Saturation		DO		Turbidity		Suspended Solids				
			m		°C		-		ppt		%		mg/L		NTU		mg/L							
					Value	Average	Value	Average	Value	Average	Value	Average	Value	Average	Value	Average	Value	Average						
2/10/2015	9:58	Fine	Middle	2.5	28.30	28.30	28.35	8.24	8.24	8.25	30.96	30.96	30.97	63.5	64.3	63.6	4.16	4.21	4.17	14.63	14.36	14.38	16	<u>15.50</u>
	10:00		Middle	2.5	28.40	28.40		8.25	8.25		30.97	30.97		64.0	62.7		4.18	4.11		14.28	14.26		15	
6/10/2015	15:53	Cloudy	Middle	2.5	27.60	27.60	27.65	8.30	8.30	8.31	30.88	30.88	31.36	69.0	69.0	70.3	4.55	4.55	4.64	9.54	9.70	<u>9.62</u>	6	6.00
	15:55		Middle	2.5	27.70	27.70		8.31	8.31		31.83	31.83		72.0	71.2		4.75	4.70		9.61	9.61		6	
8/10/2015	15:36	Fine	Middle	2.5	27.70	27.70	27.70	8.23	8.23	8.24	31.39	31.39	31.38	70.2	69.3	69.5	4.64	4.58	4.59	10.83	10.79	<u>10.86</u>	8	8.00
	15:38		Middle	2.5	27.70	27.70		8.24	8.24		31.37	31.37		69.2	69.2		4.57	4.57		10.82	11.00		8	
10/10/2015	16:17	Cloudy	Middle	2.5	27.50	27.50	27.50	8.29	8.29	8.29	31.67	31.67	31.69	73.3	74.2	72.6	4.85	4.91	4.79	8.20	8.00	8.03	6	6.00
	16:19		Middle	2.5	27.50	27.50		8.29	8.29		31.71	31.71		72.2	70.6		4.78	4.63		7.95	7.95		6	
12/10/2015	18:15	Cloudy	Middle	2.5	26.20	26.20	26.25	8.26	8.26	8.27	32.05	32.05	32.08	69.3	67.0	66.2	4.66	4.51	4.46	11.80	11.68	<u>11.79</u>	6	5.50
	18:17		Middle	2.5	26.30	26.30		8.27	8.27		32.11	32.11		65.0	63.5		4.38	4.27		11.76	11.92		5	
14/10/2015	16:55	Fine	Middle	2.5	26.40	26.40	26.40	8.30	8.30	8.30	32.29	32.29	32.30	67.1	65.5	64.8	4.50	4.40	4.35	10.37	10.37	<u>10.26</u>	8	8.00
	16:57		Middle	2.5	26.40	26.40		8.30	8.30		32.30	32.30		63.7	62.8		4.27	4.21		10.24	10.07		8	
16/10/2015	14:20	Fine	Middle	3.0	27.70	27.70	27.70	8.26	8.26	8.27	32.12	32.12	32.13	86.2	87.2	86.0	5.67	5.73	5.66	10.52	10.43	<u>10.45</u>	6	7.00
	14:22		Middle	3.0	27.70	27.70		8.27	8.27		32.13	32.13		85.4	85.3		5.62	5.61		10.44	10.40		8	
20/10/2015	14:43	Fine	Middle	2.5	26.90	26.90	26.95	8.25	8.25	8.26	32.19	32.19	32.19	72.3	70.0	70.1	4.81	4.66	4.67	5.92	6.03	6.02	3	3.50
	14:45		Middle	2.5	27.00	27.00		8.26	8.26		32.19	32.19		69.3	68.7		4.62	4.57		6.05	6.06		4	
22/10/2015	13:54	Fine	Middle	2.5	27.60	27.60	27.60	8.26	8.26	8.26	32.00	32.00	32.00	70.8	69.9	70.1	4.67	4.61	4.62	6.11	5.80	5.93	4	4.00
	13:56		Middle	2.5	27.60	27.60		8.26	8.26		31.99	31.99		70.0	69.8		4.61	4.60		5.85	5.94		4	
24/10/2015	15:30	Fine	Middle	2.5	27.40	27.40	27.40	8.33	8.33	8.33	31.98	31.98	31.98	87.6	88.2	87.7	5.80	5.84	5.81	7.03	7.06	7.05	4	4.50
	15:32		Middle	2.5	27.40	27.40		8.33	8.33		31.98	31.98		88.6	86.4		5.87	5.72		7.04	7.07		5	
26/10/2015	15:58	Fine	Middle	2.5	26.70	26.70	26.70	8.33	8.33	8.34	32.15	32.15	32.18	80.6	81.0	81.1	5.39	5.42	5.43	6.76	7.01	6.97	4	4.50
	16:00		Middle	2.5	26.70	26.70		8.35	8.35		32.21	32.21		81.9	81.0		5.48	5.42		7.05	7.04		5	

Remarks:
Single underline denotes exceedance over Action Level.
Double underline denotes exceedance over Limit Level.



**Water Monitoring Result at P5 - WCT / RT / IT
Mid-Flood Tide**

Date	Time	Weather Condition	Sampling Depth		Water Temperature			pH			Salinity			DO Saturation		DO		Turbidity		Suspended Solids				
					°C			-			ppt			%		mg/L		NTU		mg/L				
			m	Value	Average	Value	Average	Value	Average	Value	Average	Value	Average	Value	Average	Value	Average	Value	Average	Value	Average			
28/9/2015	17:50	Sunny	Middle	2.0	28.50	28.50	28.50	8.29	8.29	8.29	31.01	31.01	31.01	70.0	70.2	70.2	4.58	4.59	4.59	9.26	9.31	9.23	14	13.00
	17:51		Middle	2.0	28.50	28.50		8.29	8.29		31.01	31.01		70.5	70.0		4.61	4.58		9.17	9.16		12	
30/9/2015	17:28	Cloudy	Middle	2.5	29.40	29.40	29.50	8.23	8.23	8.23	30.53	30.53	30.56	76.1	74.2	73.5	4.90	4.77	4.73	6.44	6.44	6.40	6	6.00
	17:30		Middle	2.5	29.60	29.60		8.23	8.23		30.58	30.58		72.0	71.6		4.63	4.60		6.36	6.35		6	

Remarks:
 Single underline denotes exceedance over Action Level.
 Double underline denotes exceedance over Limit Level.



**Water Monitoring Result at P5 - WCT / RT / IT
Mid-Flood Tide**

Date	Time	Weather Condition	Sampling Depth		Water Temperature			pH			Salinity			DO Saturation		DO		Turbidity		Suspended Solids				
			m		°C		-		ppt		%		mg/L		NTU		mg/L							
					Value	Average	Value	Average	Value	Average	Value	Average	Value	Average	Value	Average	Value	Average						
2/10/2015	10:02	Fine	Middle	2.5	28.40	28.40	28.40	8.25	8.25	8.23	31.04	31.04	31.04	66.0	66.4	66.8	4.32	4.34	4.37	13.02	13.02	12.88	17	<u>17.00</u>
	10:04		Middle	2.5	28.40	28.40		8.26	8.16		31.04	31.04		67.3	67.5		4.40	4.41		12.84	12.63		17	
6/10/2015	15:57	Cloudy	Middle	2.5	27.80	27.80	27.80	8.30	8.32	8.32	31.73	31.73	31.74	66.4	65.2	65.2	4.37	4.29	4.29	21.74	21.88	<u>21.56</u>	14	14.00
	15:59		Middle	2.5	27.80	27.80		8.32	8.32		31.74	31.74		64.5	64.5		4.25	4.24		22.03	20.57		14	
8/10/2015	15:40	Fine	Middle	2.5	27.90	27.90	27.85	8.25	8.25	8.25	31.42	31.42	31.43	69.0	69.4	69.1	4.55	4.57	4.55	11.15	11.31	<u>11.33</u>	8	8.50
	15:42		Middle	2.5	27.80	27.80		8.25	8.25		31.44	31.44		69.3	68.7		4.57	4.52		11.41	11.43		9	
10/10/2015	16:21	Cloudy	Middle	2.5	27.50	27.50	27.50	8.28	8.28	8.28	31.69	31.69	31.70	64.6	66.0	66.8	4.27	4.36	4.42	5.27	5.39	5.49	6	6.00
	16:23		Middle	2.5	27.50	27.50		8.27	8.27		31.71	31.71		67.6	68.9		4.47	4.56		5.65	5.65		6	
12/10/2015	18:19	Cloudy	Middle	2.5	25.90	25.90	25.90	8.28	8.28	8.29	32.14	32.14	32.15	72.0	69.5	69.1	4.88	4.71	4.68	15.32	15.31	<u>14.58</u>	11	10.00
	18:21		Middle	2.5	25.90	25.90		8.29	8.29		32.15	32.15		67.9	66.9		4.60	4.53		13.89	13.80		9	
14/10/2015	16:59	Fine	Middle	2.5	26.90	26.90	26.90	8.30	8.30	8.30	32.18	32.19	32.19	66.7	67.8	66.2	4.45	4.52	4.41	15.11	14.78	<u>14.31</u>	9	8.50
	17:01		Middle	2.5	26.90	26.90		8.30	8.30		32.20	32.20		66.1	64.3		4.40	4.26		13.74	13.61		8	
16/10/2015	14:25	Fine	Middle	3.0	27.80	27.80	27.80	8.26	8.26	8.26	32.12	32.12	32.12	78.0	78.1	77.5	5.12	5.13	5.10	9.78	9.61	<u>9.62</u>	6	5.50
	14:27		Middle	3.0	27.80	27.80		8.26	8.26		32.12	32.12		76.3	77.6		5.04	5.09		9.58	9.51		5	
20/10/2015	14:47	Fine	Middle	2.5	26.80	26.80	26.80	8.26	8.26	8.27	32.25	32.25	32.25	69.8	67.9	69.7	4.65	4.53	4.65	8.25	8.26	8.26	6	6.50
	14:49		Middle	2.5	26.80	26.80		8.27	8.27		32.25	32.25		69.7	71.4		4.65	4.76		8.24	8.27		7	
22/10/2015	13:58	Fine	Middle	2.5	27.60	27.60	27.60	8.26	8.26	8.26	31.84	31.84	31.85	72.2	71.6	71.8	4.77	4.72	4.74	6.13	6.11	6.24	3	3.50
	14:00		Middle	2.5	27.60	27.60		8.25	8.25		31.86	31.86		72.0	71.5		4.75	4.72		6.41	6.29		4	
24/10/2015	15:35	Fine	Middle	2.5	27.30	27.30	27.30	8.34	8.34	8.35	31.91	31.91	31.91	85.4	86.4	86.8	5.67	5.73	5.76	6.11	6.12	6.12	6	6.00
	15:37		Middle	2.5	27.30	27.30		8.35	8.35		31.90	31.90		87.6	87.8		5.81	5.82		6.13	6.12		6	
26/10/2015	16:02	Fine	Middle	2.5	26.90	26.90	26.90	8.35	8.35	8.35	32.22	32.22	32.21	78.4	77.0	77.4	5.13	5.13	5.13	8.10	7.64	7.65	5	5.50
	16:04		Middle	2.5	26.90	26.90		8.35	8.35		32.20	32.20		77.1	76.9		5.14	5.12		7.49	7.36		6	

Remarks:
Single underline denotes exceedance over Action Level.
Double underline denotes exceedance over Limit Level.



**Water Monitoring Result at RW21-P789 - Sun Hung Kai Centre
Mid-Flood Tide**

Date	Time	Weather Condition	Sampling Depth m		Water Temperature °C			pH -			Salinity ppt			DO Saturation %		DO mg/L		Turbidity NTU		Suspended Solids mg/L				
					Value	Average	Value	Average	Value	Average	Value	Average	Value	Average	Value	Average	Value	Average	Value	Average	Value	Average		
28/9/2015	18:07	Sunny	Middle	3.0	28.40	28.40	28.40	8.24	8.24	8.25	31.12	31.12	31.12	70.5	70.8	70.7	4.52	4.54	4.55	9.61	9.62	9.57	16	15.50
	18:08		Middle	3.0	28.40	28.40		8.26	8.26		31.12	31.12		70.3	71.0		4.50	4.65		9.53	9.50		15	
30/9/2015	19:15	Cloudy	Middle	3.5	28.70	28.70	28.70	8.21	8.21	8.22	31.02	31.02	31.02	71.3	71.8	71.6	4.64	4.68	4.66	9.55	9.53	9.49	12	11.50
	19:16		Middle	3.5	28.70	28.70		8.23	8.23		31.02	31.02		71.7	71.7		4.67	4.66		9.45	9.42		11	

Remarks:
Single underline denotes exceedance over Action Level.
Double underline denotes exceedance over Limit Level.



**Water Monitoring Result at RW21-P789 - Sun Hung Kai Centre
Mid-Flood Tide**

Date	Time	Weather Condition	Sampling Depth		Water Temperature		pH			Salinity			DO Saturation		DO		Turbidity		Suspended Solids					
			m		°C		-		ppt		%		mg/L		NTU		mg/L							
					Value	Average	Value	Average	Value	Average	Value	Average	Value	Average	Value	Average	Value	Average						
2/10/2015	10:19	Fine	Middle	3.5	28.70	28.70	28.70	8.22	8.22	8.23	30.90	30.90	30.90	72.3	71.5	70.0	4.71	4.65	4.56	8.81	8.80	8.80	10	10.00
	10:21		Middle	3.5	28.70	28.70		8.23	8.23		30.89	30.89		68.7	67.6		4.47	4.40		8.80	8.80			
6/10/2015	16:18	Cloudy	Middle	3.5	27.80	27.80	27.80	8.29	8.29	8.30	31.61	31.61	31.61	80.6	78.3	78.0	5.31	5.16	5.14	7.65	7.63	7.63	4	3.00
	16:20		Middle	3.5	27.80	27.80		8.30	8.30		31.61	31.61		76.4	76.8		5.03	5.06		7.61	7.61			
8/10/2015	15:52	Fine	Middle	3.5	28.30	28.30	28.30	8.22	8.22	8.23	30.90	30.90	30.90	79.2	79.3	78.4	5.19	5.20	5.14	8.79	8.63	8.65	6	6.00
	15:54		Middle	3.5	28.30	28.30		8.24	8.24		30.90	30.90		78.2	76.7		5.12	5.03		8.59	8.58			
10/10/2015	16:36	Cloudy	Middle	3.5	27.60	27.60	27.55	8.28	8.28	8.28	31.68	31.68	31.69	68.8	67.7	68.1	4.55	4.47	4.49	12.69	12.68	12.55	10	9.50
	16:38		Middle	3.5	27.50	27.50		8.28	8.28		31.69	31.69		68.7	67.2		4.54	4.41		12.45	12.39			
12/10/2015	16:25	Cloudy	Middle	3.5	26.30	26.30	26.30	8.22	8.22	8.23	32.08	32.08	32.09	69.8	69.6	70.4	4.70	4.69	4.75	10.83	10.89	10.91	8	8.00
	16:27		Middle	3.5	26.30	26.30		8.24	8.24		32.09	32.09		71.1	71.2		4.79	4.80		10.95	10.98			
14/10/2015	18:11	Fine	Middle	3.0	26.30	26.30	26.25	7.85	7.85	7.87	32.56	32.56	32.57	78.7	78.5	77.9	5.29	5.28	5.24	11.38	11.54	11.41	8	8.50
	18:12		Middle	3.0	26.20	26.20		7.93	7.86		32.56	32.59		77.5	76.9		5.21	5.17		11.33	11.37			
16/10/2015	14:45	Fine	Middle	3.5	27.40	27.40	27.40	8.28	8.28	8.28	32.16	32.16	32.17	74.5	73.1	76.0	4.92	4.81	5.02	9.70	9.75	9.67	8	8.50
	14:47		Middle	3.5	27.40	27.40		8.28	8.28		32.17	32.17		77.3	79.2		5.10	5.23		9.61	9.61			
20/10/2015	11:30	Fine	Middle	3.5	27.60	27.60	27.60	8.26	8.26	8.26	32.36	32.36	32.36	85.4	83.9	83.5	5.62	5.50	5.49	8.93	8.92	8.94	10	10.00
	11:32		Middle	3.5	27.60	27.60		8.26	8.26		32.36	32.36		82.2	82.6		5.41	5.43		8.94	8.97			
22/10/2015	14:15	Fine	Middle	3.5	27.70	27.70	27.65	8.23	8.23	8.24	32.10	32.10	32.09	83.8	84.6	82.3	5.53	5.58	5.43	5.32	5.24	5.28	3	3.00
	14:17		Middle	3.5	27.60	27.60		8.25	8.25		32.08	32.08		81.6	79.3		5.38	5.23		5.24	5.32			
24/10/2015	15:50	Fine	Middle	3.5	27.50	27.50	27.50	8.33	8.33	8.34	32.04	32.04	32.04	94.4	94.4	94.0	6.10	6.23	6.17	7.35	7.32	7.25	7	7.50
	15:52		Middle	3.5	27.50	27.50		8.34	8.34		32.04	32.04		94.1	93.0		6.21	6.14		7.16	7.16			
26/10/2015	16:20	Fine	Middle	3.5	26.40	26.40	26.40	8.33	8.33	8.35	32.28	32.28	32.30	83.1	85.3	85.0	5.71	5.73	5.74	8.57	8.12	8.24	7	6.50
	16:22		Middle	3.5	26.40	26.40		8.36	8.36		32.32	32.32		86.4	85.1		5.80	5.72		8.11	8.17			

Remarks:
Single underline denotes exceedance over Action Level.
Double underline denotes exceedance over Limit Level.



**Water Monitoring Result at WSD19 - Sheung Wan
Mid-Flood Tide**

Date	Time	Weater Condition	Sampling Depth		Water Temperature			pH			Salinity			DO Saturation		DO		Turbidity		Suspended Solids				
					°C		-		ppt		%		mg/L		NTU		mg/L							
			m	Value	Average	Value	Average	Value	Average	Value	Average	Value	Average	Value	Average	Value	Average	Value	Average					
28/9/2015	17:00	Sunny	Middle	2.0	28.80	28.80	28.80	8.03	8.03	8.07	30.93	30.99	30.95	75.9	76.0	74.3	4.93	4.94	4.83	28.23	28.70	<u>28.26</u>	24	<u>24.50</u>
	17:01		Middle	2.0	28.80	28.80		8.10	8.12		30.93	30.93		73.1	72.3		4.75	4.70		28.02	28.10		25	
30/9/2015	20:05	Cloudy	Middle	2.5	28.60	28.60	28.60	8.08	8.08	8.10	30.94	30.94	30.94	71.8	72.5	71.8	4.69	4.74	4.69	15.93	15.87	<u>15.65</u>	7	7.50
	20:06		Middle	2.5	28.60	28.60		8.22	8.01		30.94	30.94		71.7	71.1		4.69	4.65		15.45	15.33		8	

Remarks:
Single underline denotes exceedance over Action Level.
Double underline denotes exceedance over Limit Level.



**Water Monitoring Result at WSD19 - Sheung Wan
Mid-Flood Tide**

Date	Time	Weather Condition	Sampling Depth		Water Temperature			pH			Salinity			DO Saturation		DO		Turbidity		Suspended Solids			
			m		°C		-		ppt		%		mg/L		NTU		mg/L						
					Value	Average	Value	Average	Value	Average	Value	Average	Value	Average	Value	Average	Value	Average					
2/10/2015	9:01	Fine	Middle	3.5	28.50	28.50	28.50	8.27	8.27	8.28	30.95	30.95	30.94	78.2	77.2	76.5	5.11	5.05	5.00	15.44	15.43	19	<u><u>19.00</u></u>
	9:03		Middle	3.5	28.50	28.50	28.50	8.28	8.28	8.28	30.92	30.92	30.94	76.1	74.5	76.5	4.97	4.87	5.00	15.28	15.23	19	
6/10/2015	14:48	Cloudy	Middle	3.5	27.90	27.90	27.90	8.18	8.18	8.21	31.41	31.41	31.45	74.7	74.2	74.4	4.92	4.88	4.90	12.38	12.54	8	8.50
	14:50		Middle	3.5	27.90	27.90	27.90	8.24	8.24	8.21	31.48	31.48	31.45	74.7	74.0	74.4	4.92	4.87	4.90	12.54	12.38	9	
8/10/2015	14:45	Fine	Middle	3.5	29.40	29.40	29.50	8.26	8.26	8.25	30.67	30.67	30.65	75.5	76.7	76.4	4.86	4.94	4.92	8.79	8.82	9	8.50
	14:47		Middle	3.5	29.60	29.60	29.50	8.24	8.24	8.25	30.62	30.62	30.65	77.5	76.0	76.4	4.99	4.89	4.92	8.60	8.60	8	
10/10/2015	15:26	Cloudy	Middle	3.5	27.70	27.70	27.70	8.38	8.38	8.37	31.63	31.63	31.64	62.4	61.4	61.6	4.10	4.05	4.06	10.80	10.82	10	9.50
	15:28		Middle	3.5	27.70	27.70	27.70	8.36	8.36	8.37	31.64	31.64	31.64	61.3	61.1	61.6	4.05	4.04	4.06	10.77	10.73	9	
12/10/2015	15:23	Cloudy	Middle	3.5	26.70	26.70	26.65	8.34	8.34	8.34	32.24	32.24	32.30	72.9	72.2	70.9	4.87	4.83	4.74	10.76	10.95	6	5.50
	15:25		Middle	3.5	26.60	26.60	26.65	8.33	8.33	8.34	32.35	32.35	32.30	70.0	68.6	70.9	4.68	4.58	4.74	11.14	11.10	5	
14/10/2015	19:35	Fine	Middle	3.5	26.10	26.10	26.10	8.02	8.02	8.04	32.43	32.43	32.43	77.3	77.8	76.3	5.22	5.25	5.16	11.62	11.13	8	8.00
	19:36		Middle	3.5	26.10	26.10	26.10	8.08	8.02	8.04	32.43	32.43	32.43	73.4	76.5	76.3	4.98	5.18	5.16	10.76	10.55	8	
16/10/2015	13:09	Fine	Middle	3.5	28.60	28.60	28.65	8.25	8.25	8.25	32.18	32.18	32.18	78.9	78.2	78.3	5.11	5.07	5.07	11.02	11.01	9	8.50
	13:11		Middle	3.5	28.70	28.70	28.65	8.24	8.24	8.25	32.17	32.17	32.18	78.0	78.2	78.3	5.05	5.06	5.07	11.01	11.01	8	
20/10/2015	13:30	Fine	Middle	3.5	27.70	27.70	27.85	8.23	8.23	8.24	32.12	32.12	32.10	84.8	84.4	85.6	5.56	5.54	5.61	9.10	9.29	8	7.00
	13:32		Middle	3.5	28.00	28.00	27.85	8.25	8.25	8.24	32.08	32.08	32.10	85.6	87.4	85.6	5.61	5.73	5.61	9.31	9.61	6	
22/10/2015	11:16	Fine	Middle	3.5	27.80	27.80	27.80	8.29	8.29	8.28	32.17	32.17	32.18	79.1	79.2	79.8	5.20	5.20	5.24	8.78	8.83	7	7.50
	11:18		Middle	3.5	27.80	27.80	27.80	8.27	8.27	8.28	32.18	32.18	32.18	80.9	80.1	79.8	5.31	5.26	5.24	8.81	8.81	8	
24/10/2015	14:15	Fine	Middle	3.0	28.30	28.30	28.35	8.30	8.30	8.30	31.84	31.84	31.84	90.8	91.3	91.1	5.92	5.95	5.93	7.88	7.64	8	8.50
	14:17		Middle	3.0	28.40	28.40	28.35	8.30	8.30	8.30	31.83	31.83	31.84	91.4	90.7	91.1	5.95	5.90	5.93	7.89	7.94	9	
26/10/2015	15:00	Fine	Middle	3.0	27.10	27.10	27.10	8.30	8.30	8.32	31.78	31.78	31.79	85.7	88.8	88.2	5.71	5.91	5.87	6.75	6.72	6	6.00
	15:02		Middle	3.0	27.10	27.10	27.10	8.34	8.34	8.32	31.79	31.79	31.79	89.5	88.8	88.2	5.96	5.91	5.87	6.78	6.79	6	

Remarks:
Single underline denotes exceedance over Action Level.
Double underline denotes exceedance over Limit Level.



**Water Monitoring Result at C7 - Windsor House
Mid-Ebb Tide**

Date	Time	Weater Condition	Sampling Depth m		Water Temperature		pH		Salinity		DO Saturation		DO		Turbidity		Suspended Solids							
					°C		-		ppt		%		mg/L		NTU		mg/L							
					Value	Average	Value	Average	Value	Average	Value	Average	Value	Average	Value	Average	Value	Average	Value	Average				
28/9/2015	10:15	Sunny	Middle	-	29.70	29.70	29.75	8.28	8.28	8.28	31.68	31.68	31.68	70.5	70.7	70.5	4.51	4.52	4.51	5.06	5.08	5.04	5	5.00
	10:16		Middle	-	29.80	29.80		8.27	8.27		31.68	31.68		70.2	70.4		4.49	4.51		5.02	5.00		5	
30/9/2015	11:25	Fine	Middle	-	30.30	30.30	30.45	8.19	8.19	8.23	31.68	31.67	31.69	76.4	77.2	76.9	4.83	4.87	4.85	9.87	9.88	9.84	7	8.00
	11:27		Middle	-	30.60	30.60		8.26	8.26		31.71	31.71		76.9	77.0		4.85	4.85		9.76	9.86		9	

Remarks:
Single underline denotes exceedance over Action Level.
Double underline denotes exceedance over Limit Level.



**Water Monitoring Result at C7 - Windsor House
Mid-Ebb Tide**

Date	Time	Weather Condition	Sampling Depth		Water Temperature			pH			Salinity		DO Saturation		DO		Turbidity		Suspended Solids					
					°C		-		ppt		%		mg/L		NTU		mg/L							
					Value	Average	Value	Average	Value	Average	Value	Average	Value	Average	Value	Average	Value	Average	Value	Average				
2/10/2015	16:10	Fine	Middle	-	29.10	29.10	29.10	8.04	8.04	8.04	30.85	30.85	30.86	76.0	76.5	75.2	4.92	4.96	4.87	6.00	6.00	6.00	4	4.50
	16:12		Middle	-	29.10	29.10		8.04	8.04		30.86	30.86		73.9	74.2		4.78	4.80		6.01	5.98		5	
6/10/2015	9:50	Cloudy	Middle	-	27.80	27.80	27.70	7.99	7.99	8.06	30.86	30.86	30.86	75.8	78.0	76.9	5.02	5.17	5.10	9.31	9.23	<u>9.22</u>	56	<u>30.00</u>
	9:52		Middle	-	27.60	27.60		8.13	8.13		30.86	30.86		75.9	77.7		5.03	5.16		9.18	9.16		4	
8/10/2015	10:35	Fine	Middle	-	28.80	28.80	28.75	8.03	8.03	8.07	30.62	30.62	30.62	74.0	71.1	56.8	4.83	4.83	4.74	4.58	4.43	4.46	2	2.50
	10:37		Middle	-	28.70	28.70		8.11	8.11		30.61	30.61		72.6	73.3		4.53	4.78		4.43	4.41		3	
10/10/2015	11:25	Fine	Middle	-	27.90	27.90	27.90	8.17	8.17	8.19	31.24	31.24	31.25	73.5	74.6	73.9	4.84	4.91	4.87	15.67	15.67	15.66	10	10.50
	11:27		Middle	-	27.90	27.90		8.20	8.20		31.26	31.26		74.4	72.9		4.91	4.80		15.67	15.62		11	
12/10/2015	12:10	Cloudy	Middle	-	27.30	27.30	27.20	8.15	8.15	8.17	31.81	31.81	31.82	83.0	84.0	83.2	5.52	5.58	5.53	6.33	6.32	6.38	5	5.00
	12:12		Middle	-	27.10	27.10		8.19	8.19		31.82	31.82		82.8	82.8		5.51	5.51		6.42	6.46		5	
14/10/2015	14:50	Fine	Middle	-	27.90	27.90	27.90	8.15	8.15	8.17	31.98	31.98	32.04	80.0	81.7	80.8	5.25	5.36	5.30	3.61	3.60	3.62	4	5.00
	14:52		Middle	-	27.90	27.90		8.19	8.19		32.09	32.09		81.0	80.3		5.32	5.27		3.63	3.65		6	
16/10/2015	9:45	Fine	Middle	-	27.40	27.40	27.35	8.19	8.19	8.20	31.82	31.82	31.83	76.7	78.6	78.4	5.09	5.21	5.20	5.14	5.09	5.04	8	7.00
	9:47		Middle	-	27.30	27.30		8.20	8.20		31.83	31.83		79.3	79.0		5.26	5.24		5.00	4.91		6	
20/10/2015	1:55	Fine	Middle	-	25.50	25.50	25.50	8.16	8.16	8.17	32.28	32.28	32.29	75.5	76.4	75.6	5.15	5.21	5.16	4.14	4.08	4.11	4	3.50
	1:56		Middle	-	25.50	25.50		8.17	8.17		32.29	32.29		74.9	75.4		5.11	5.15		4.07	4.16		3	
22/10/2015	3:40	Cloudy	Middle	-	26.30	26.30	26.30	8.24	8.24	8.24	32.41	32.41	32.41	76.2	75.9	76.4	5.12	5.11	5.14	2.36	2.38	2.54	3	4.00
	3:41		Middle	-	26.30	26.30		8.24	8.24		32.41	32.41		76.6	76.8		5.15	5.17		2.74	2.69		5	
24/10/2015	10:30	Fine	Middle	-	27.90	27.90	27.95	8.02	8.02	8.07	31.64	31.64	31.63	80.8	80.5	80.7	5.31	5.29	5.30	5.15	8.18	5.93	7	7.50
	10:32		Middle	-	28.00	28.00		8.12	8.12		31.62	31.62		81.3	80.1		5.34	5.26		5.19	5.19		8	
26/10/2015	12:20	Cloudy	Middle	-	27.00	27.00	27.00	8.13	8.13	8.16	32.12	32.12	32.12	80.0	80.1	81.6	5.32	5.31	5.42	6.64	6.67	6.67	16	10.00
	12:22		Middle	-	27.00	27.00		8.19	8.19		32.12	32.12		83.0	83.2		5.52	5.54		6.69	6.69		4	

Remarks:
Single underline denotes exceedance over Action Level.
Double underline denotes exceedance over Limit Level.



**Water Monitoring Result at C1 - HKCEC
Mid-Ebb Tide**

Date	Time	Weater Condition	Sampling Depth		Water Temperature			pH			Salinity			DO Saturation		DO		Turbidity		Suspended Solids				
					°C			-			ppt			%		mg/L		NTU		mg/L				
					Value	Average		Value	Average		Value	Average		Value	Average		Value	Average	Value	Average	Value	Average		
28/9/2015	14:23	Sunny	Middle	2.0	29.10	29.10	29.10	8.20	8.20	8.20	30.69	30.69	30.69	71.4	73.6	72.6	4.63	4.77	4.71	8.80	8.47	8.63	5	5.00
	14:24		Middle	2.0	29.10	29.10		8.20	8.20		30.69	30.69		72.0	73.4		4.69	4.76		8.56	8.68		5	
30/9/2015	15:24	Fine	Middle	2.5	29.00	29.00	29.10	8.26	8.26	8.26	30.68	30.43	30.58	61.7	63.2	63.3	4.00	4.10	4.11	6.84	6.88	6.70	6	7.00
	15:26		Middle	2.5	29.20	29.20		8.26	8.26		30.58	30.64		63.6	64.7		4.13	4.19		6.60	6.47		8	

Remarks:
Single underline denotes exceedance over Action Level.
Double underline denotes exceedance over Limit Level.



**Water Monitoring Result at C1 - HKCEC
Mid-Ebb Tide**

Date	Time	Weather Condition	Sampling Depth		Water Temperature			pH			Salinity		DO Saturation		DO		Turbidity		Suspended Solids					
					°C			-			ppt		%		mg/L		NTU		mg/L					
					Value	Average		Value	Average		Value	Average	Value	Average	Value	Average	Value	Average	Value	Average				
2/10/2015	15:24	Fine	Middle	2.5	29.00	29.00	29.00	8.26	8.26	8.26	30.89	30.89	30.93	68.3	68.4	68.9	4.42	4.43	4.46	6.45	6.29	6.42	7	6.50
	15:26		Middle	2.5	29.00	29.00		8.26	8.26		30.97	30.97		69.5	69.4		4.51	4.49		6.41	6.53		6	
6/10/2015	8:56	Cloudy	Middle	2.5	27.90	27.90	28.00	8.31	8.31	8.31	31.61	31.61	31.63	72.1	71.8	70.8	4.72	4.71	4.64	5.45	5.46	5.48	3	3.00
	8:58		Middle	2.5	28.10	28.10		8.30	8.30		31.65	31.65		71.0	68.4		4.65	4.48		5.48	5.51		3	
8/10/2015	9:59	Fine	Middle	2.5	28.00	28.00	28.00	8.23	8.23	8.23	30.80	30.80	30.81	67.5	65.8	65.2	4.45	4.39	4.32	6.11	6.11	6.07	4	3.50
	10:01		Middle	2.5	28.00	28.00		8.23	8.23		30.82	30.82		64.3	63.2		4.29	4.16		5.97	6.09		3	
10/10/2015	10:48	Fine	Middle	2.5	27.50	27.50	27.50	8.32	8.32	8.32	32.09	32.09	32.09	67.5	66.9	67.1	4.46	4.42	4.43	9.99	10.00	10.00	7	8.00
	10:50		Middle	2.5	27.50	27.50		8.31	8.31		32.09	32.09		66.9	67.2		4.41	4.44		10.01	10.01		9	
12/10/2015	14:37	Cloudy	Middle	2.5	27.10	27.10	27.05	8.28	8.28	8.28	32.08	32.08	32.10	68.1	68.4	69.1	4.53	4.55	4.60	10.24	10.23	<u>10.23</u>	9	9.50
	14:39		Middle	2.5	27.00	27.00		8.27	8.27		32.11	32.11		69.5	70.5		4.64	4.69		10.23	10.22		10	
14/10/2015	14:06	Fine	Middle	2.5	27.40	27.40	27.45	8.29	8.29	8.29	32.35	32.35	32.36	73.3	72.0	71.8	4.84	4.75	4.74	12.60	12.56	<u>12.68</u>	9	8.50
	14:08		Middle	2.5	27.50	27.50		8.29	8.29		32.36	32.36		70.7	71.2		4.67	4.70		12.77	12.79		8	
16/10/2015	9:05	Fine	Middle	2.5	26.70	26.70	26.70	8.28	8.28	8.28	32.06	32.06	32.07	72.8	76.1	75.0	4.87	5.09	5.02	11.61	11.58	<u>11.75</u>	10	10.00
	9:07		Middle	2.5	26.70	26.70		8.27	8.27		32.07	32.07		75.7	75.5		5.06	5.05		11.87	11.92		10	
20/10/2015	5:25	Fine	Middle	2.5	26.10	26.10	26.03	8.27	8.27	8.28	32.34	32.34	32.35	70.5	70.3	70.1	4.78	4.77	4.77	6.53	6.41	6.45	5	5.50
	5:26		Middle	2.5	25.90	26.00		8.28	8.28		32.34	32.37		69.6	70.0		4.76	4.76		6.46	6.39		6	
22/10/2015	4:47	Cloudy	Middle	2.5	26.30	26.30	26.30	8.27	8.27	8.28	32.43	32.43	32.43	79.7	79.9	79.4	5.38	5.39	5.35	3.23	3.16	3.16	5	4.50
	4:48		Middle	2.5	26.30	26.30		8.28	8.28		32.43	32.43		78.8	79.0		5.30	5.31		3.11	3.14		4	
24/10/2015	9:55	Fine	Middle	2.5	27.20	27.20	27.20	8.30	8.30	8.30	32.38	32.38	32.39	74.4	73.6	73.2	4.93	4.87	4.85	7.16	7.24	7.21	6	6.00
	9:57		Middle	2.5	27.20	27.20		8.30	8.30		32.39	32.39		72.7	71.9		4.82	4.76		7.25	7.19		6	
26/10/2015	11:35	Cloudy	Middle	2.5	26.60	26.60	26.60	8.36	8.60	8.48	32.46	32.46	32.47	81.2	84.4	84.8	5.43	5.65	5.67	10.71	10.65	<u>10.62</u>	9	8.50
	11:37		Middle	2.5	26.60	26.60		8.36	8.60		32.47	32.47		86.9	86.5		5.81	5.79		10.55	10.55		8	

Remarks:
Single underline denotes exceedance over Action Level.
Double underline denotes exceedance over Limit Level.



**Water Monitoring Result at P1 - HKCEC Phase I
Mid-Ebb Tide**

Date	Time	Weater Condition	Sampling Depth		Water Temperature		pH		Salinity		DO Saturation		DO		Turbidity		Suspended Solids							
					°C		-		ppt		%		mg/L		NTU		mg/L							
					Value	Average	Value	Average	Value	Average	Value	Average	Value	Average	Value	Average	Value	Average	Value	Average				
28/9/2015	13:52	Sunny	Middle	2.0	29.40	29.40	29.35	8.27	8.27	8.27	31.04	31.04	31.04	73.6	74.6	73.8	4.77	4.81	4.76	8.33	8.65	8.46	8	8.50
	13:53		Middle	2.0	29.30	29.30		8.27	8.27		31.04	31.04		74.0	72.9		4.77	4.70		8.47	8.40		9	
30/9/2015	15:08	Fine	Middle	2.5	29.70	29.70	29.90	7.94	7.94	7.96	30.68	30.68	30.66	79.3	77.7	76.7	5.07	4.96	4.89	7.52	7.49	7.49	6	7.00
	15:10		Middle	2.5	30.10	30.10		7.98	7.98		30.64	30.64		75.4	74.5		4.81	4.72		7.48	7.45		8	

Remarks:
 Single underline denotes exceedance over Action Level.
 Double underline denotes exceedance over Limit Level.



**Water Monitoring Result at P1 - HKCEC Phase I
Mid-Ebb Tide**

Date	Time	Weather Condition	Sampling Depth		Water Temperature			pH			Salinity		DO Saturation		DO		Turbidity		Suspended Solids					
					°C			-			ppt		%		mg/L		NTU		mg/L					
					Value	Average		Value	Average		Value	Average	Value	Average	Value	Average	Value	Average	Value	Average				
2/10/2015	15:08	Fine	Middle	2.5	28.50	28.50	28.55	8.20	8.20	8.22	30.87	30.87	30.86	67.3	70.8	69.2	4.40	4.63	4.52	8.01	7.98	7.97	7	6.50
	15:10		Middle	2.5	28.60	28.60		8.24	8.24		30.85	30.85		69.2	69.3		4.52	4.53		7.94	7.95		6	
6/10/2015	8:40	Cloudy	Middle	2.5	27.30	27.30	27.30	8.27	8.27	8.28	31.64	31.64	31.65	74.3	75.3	74.9	4.94	5.00	4.98	8.17	8.19	8.19	2	3.00
	8:42		Middle	2.5	27.30	27.30		8.29	8.29		31.65	31.65		74.8	75.2		4.97	4.99		8.20	8.21		4	
8/10/2015	9:43	Fine	Middle	2.5	27.60	27.60	27.60	8.15	8.15	8.17	30.74	30.74	30.74	61.5	61.3	61.4	4.08	4.07	4.08	6.28	6.27	6.27	4	4.50
	9:45		Middle	2.5	27.60	27.60		8.18	8.18		30.74	30.74		61.6	61.1		4.09	4.06		6.27	6.27		5	
10/10/2015	10:32	Fine	Middle	2.5	27.20	27.20	27.20	8.29	8.29	8.30	31.92	31.92	32.43	70.9	69.9	68.4	4.70	4.64	4.54	7.50	7.52	7.51	6	7.00
	10:34		Middle	2.5	27.20	27.20		8.30	8.30		32.93	32.93		67.2	65.7		4.46	4.36		7.51	7.50		8	
12/10/2015	14:21	Cloudy	Middle	2.5	26.10	26.10	26.10	8.21	8.21	8.23	32.23	32.23	32.23	72.1	72.0	71.9	4.87	4.86	4.85	11.96	11.96	<u>11.96</u>	10	9.50
	14:23		Middle	2.5	26.10	26.10		8.24	8.24		32.22	32.22		71.7	71.6		4.84	4.84		11.97	11.95		9	
14/10/2015	13:50	Fine	Middle	2.5	27.90	27.90	27.75	8.21	8.21	8.24	32.41	32.41	32.39	75.5	76.1	74.6	4.98	5.01	4.91	9.77	9.78	<u>9.61</u>	6	5.50
	13:52		Middle	2.5	27.60	27.60		8.26	8.26		32.36	32.36		73.9	72.9		4.87	4.77		9.57	9.32		5	
16/10/2015	8:45	Fine	Middle	2.5	26.10	26.10	26.10	8.32	8.32	8.30	31.84	31.84	31.89	87.0	87.3	86.8	5.89	5.94	5.88	8.93	9.01	9.01	6	7.00
	8:47		Middle	2.5	26.10	26.10		8.28	8.28		31.93	31.93		87.0	85.8		5.89	5.80		9.00	9.09		8	
20/10/2015	4:26	Fine	Middle	2.5	25.30	25.30	25.25	7.61	7.61	7.63	31.62	31.62	31.62	75.9	76.8	75.4	5.23	8.29	5.94	5.99	5.87	5.88	4	4.50
	4:27		Middle	2.5	25.20	25.20		7.64	7.65		31.61	31.61		74.4	74.4		5.12	5.12		5.85	5.82		5	
22/10/2015	4:22	Cloudy	Middle	2.5	26.20	26.20	26.20	8.18	8.18	8.19	32.37	32.37	32.37	72.7	73.1	72.9	4.90	4.93	4.91	2.85	2.77	2.76	4	3.00
	4:23		Middle	2.5	26.20	26.20		8.19	8.19		32.37	32.37		73.0	72.6		4.92	4.90		2.75	2.65		2	
24/10/2015	9:39	Fine	Middle	2.5	27.20	27.20	27.35	8.26	8.26	8.27	32.43	32.43	32.38	75.3	75.2	74.3	4.98	4.97	4.91	7.65	7.63	7.63	8	7.00
	9:41		Middle	2.5	27.50	27.50		8.28	8.28		32.33	32.33		73.8	72.8		4.88	4.81		7.62	7.62		6	
26/10/2015	11:15	Cloudy	Middle	2.5	26.30	26.30	26.30	8.30	8.30	8.32	32.30	32.30	32.04	89.2	89.6	88.6	6.00	6.06	5.98	7.16	7.18	7.18	15	<u>15.50</u>
	11:17		Middle	2.5	26.30	26.30		8.33	8.33		31.78	31.78		88.2	87.3		5.96	5.91		7.19	7.18		16	

Remarks:
Single underline denotes exceedance over Action Level.
Double underline denotes exceedance over Limit Level.



**Water Monitoring Result at P3 - APA
Mid-Ebb Tide**

Date	Time	Weater Condition	Sampling Depth		Water Temperature			pH			Salinity		DO Saturation		DO		Turbidity		Suspended Solids					
					°C			-			ppt		%		mg/L		NTU		mg/L					
					Value	Average		Value	Average		Value	Average	Value	Average	Value	Average	Value	Average	Value	Average				
28/9/2015	13:58	Sunny	Middle	2.0	29.10	29.10	29.10	8.28	8.28	8.28	30.89	30.89	30.89	77.4	77.3	77.4	5.01	5.00	5.01	8.70	8.56	8.57	8	8.00
	13:59		Middle	2.0	29.10	29.10		8.28	8.28		30.89	30.89		77.5	77.4		5.02	5.01		8.39	8.61		8	
30/9/2015	15:12	Fine	Middle	2.5	29.20	29.20	29.25	8.15	8.15	8.17	30.76	30.76	30.74	76.7	76.8	76.9	4.96	4.96	4.97	6.90	6.70	6.71	6	6.00
	15:14		Middle	2.5	29.30	29.30		8.19	8.19		30.72	30.72		78.0	76.2		5.04	4.90		6.60	6.62		6	

Remarks:
Single underline denotes exceedance over Action Level.
Double underline denotes exceedance over Limit Level.



**Water Monitoring Result at P3 - APA
Mid-Ebb Tide**

Date	Time	Weather Condition	Sampling Depth		Water Temperature			pH			Salinity		DO Saturation		DO		Turbidity		Suspended Solids					
					°C			-			ppt		%		mg/L		NTU		mg/L					
					Value	Average		Value	Average		Value	Average	Value	Average	Value	Average	Value	Average	Value	Average				
2/10/2015	15:12	Fine	Middle	2.5	28.50	28.50	28.50	8.28	8.28	8.27	30.81	30.81	30.81	66.0	65.3	66.3	4.32	4.27	4.34	7.62	7.59	7.62	10	9.50
	15:14		Middle	2.5	28.50	28.50		8.26	8.26		30.81	30.81		65.8	68.0		4.30	4.45		7.59	7.68		9	
6/10/2015	8:44	Cloudy	Middle	2.5	27.30	27.30	27.30	8.30	8.30	8.30	31.62	31.62	31.63	80.2	79.8	79.3	5.32	5.29	5.26	7.66	7.44	7.36	4	3.50
	8:46		Middle	2.5	27.30	27.30		8.30	8.30		31.63	31.63		79.3	78.0		5.26	5.18		7.18	7.17		3	
8/10/2015	9:47	Fine	Middle	2.5	27.70	27.70	27.70	8.20	8.20	8.21	30.80	30.80	30.80	68.8	67.7	67.4	4.56	4.48	4.46	5.20	5.20	5.21	3	3.50
	9:49		Middle	2.5	27.70	27.70		8.21	8.21		30.80	30.80		66.7	66.2		4.42	4.39		5.20	5.24		4	
10/10/2015	10:36	Fine	Middle	2.5	27.10	27.10	27.15	8.31	8.31	8.32	31.88	31.88	31.92	71.6	73.0	72.1	4.76	4.85	4.79	7.94	8.16	8.13	7	7.50
	10:38		Middle	2.5	27.20	27.20		8.32	8.32		31.95	31.95		72.6	71.3		4.82	4.74		8.19	8.22		8	
12/10/2015	14:25	Cloudy	Middle	2.5	26.20	26.20	26.20	8.26	8.26	8.26	32.21	32.21	32.21	68.6	67.9	67.1	4.63	4.55	4.52	9.87	9.62	9.65	9	9.00
	14:27		Middle	2.5	26.20	26.20		8.26	8.26		32.21	32.21		66.2	65.6		4.46	4.42		9.57	9.53		9	
14/10/2015	13:54	Fine	Middle	2.5	27.00	27.00	27.15	8.28	8.28	8.28	32.37	32.37	32.35	76.7	75.8	75.7	5.09	5.02	5.02	10.29	10.06	10.07	7	6.50
	13:56		Middle	2.5	27.30	27.30		8.28	8.28		32.32	32.32		75.0	75.2		4.97	4.98		10.01	9.93		6	
16/10/2015	8:50	Fine	Middle	2.5	26.00	26.00	26.00	8.28	8.28	8.28	31.96	31.96	31.96	78.9	81.3	80.4	5.34	5.50	5.44	11.92	11.45	11.59	10	10.00
	8:52		Middle	2.5	26.00	26.00		8.27	8.27		31.96	31.96		80.8	80.5		5.48	5.45		11.44	11.54		10	
20/10/2015	4:38	Fine	Middle	2.5	25.30	25.30	25.30	8.27	8.27	8.27	32.28	32.28	32.28	72.3	73.0	72.2	4.95	5.00	4.95	6.19	6.16	6.24	5	4.50
	4:39		Middle	2.5	25.30	25.30		8.27	8.27		32.27	32.27		72.0	71.5		4.94	4.90		6.30	6.32		4	
22/10/2015	4:29	Cloudy	Middle	2.5	26.30	26.30	26.25	8.30	8.30	8.30	32.41	32.41	32.42	74.7	75.7	75.0	5.03	5.10	5.05	2.16	2.08	2.10	5	4.50
	4:30		Middle	2.5	26.20	26.20		8.30	8.30		32.42	32.42		75.1	74.6		5.06	5.02		2.04	2.10		4	
24/10/2015	9:43	Fine	Middle	2.5	27.00	27.00	27.00	8.29	8.29	8.30	32.40	32.40	32.40	74.0	72.9	72.3	4.42	4.85	4.68	6.44	6.44	6.45	5	5.00
	9:45		Middle	2.5	27.00	27.00		8.30	8.30		32.39	32.39		71.3	71.0		4.74	4.72		6.45	6.45		5	
26/10/2015	11:20	Cloudy	Middle	2.5	26.30	26.30	26.30	8.36	8.36	8.36	32.44	32.44	32.44	85.5	86.5	85.7	5.75	5.82	5.76	7.04	7.03	7.03	6	6.00
	11:22		Middle	2.5	26.30	26.30		8.36	8.36		32.44	32.44		86.5	84.2		5.82	5.63		7.03	7.03		6	

Remarks:
Single underline denotes exceedance over Action Level.
Double underline denotes exceedance over Limit Level.



**Water Monitoring Result at P4 - SOC
Mid-Ebb Tide**

Date	Time	Weater Condition	Sampling Depth		Water Temperature			pH			Salinity		DO Saturation		DO		Turbidity		Suspended Solids					
					°C			-			ppt		%		mg/L		NTU		mg/L					
					Value	Average		Value	Average		Value	Average	Value	Average	Value	Average	Value	Average	Value	Average	Value	Average		
28/9/2015	14:07	Sunny	Middle	2.0	29.00	29.00	29.00	8.24	8.24	8.25	30.79	30.79	30.80	80.3	81.0	80.5	5.21	5.26	5.23	8.59	8.38	8.43	6	6.50
	14:08		Middle	2.0	29.00	29.00		8.25	8.25		30.80	30.80		80.4	80.2		5.22	5.21		8.32	8.43		7	
30/9/2015	15:16	Fine	Middle	2.5	28.90	28.90	29.00	8.21	8.21	8.21	30.67	30.67	30.67	72.6	69.6	70.3	4.71	4.51	4.56	5.91	5.91	5.92	7	7.50
	15:18		Middle	2.5	29.10	29.10		8.21	8.21		30.66	30.66		69.7	69.3		4.52	4.50		5.91	5.94		8	

Remarks:
Single underline denotes exceedance over Action Level.
Double underline denotes exceedance over Limit Level.



**Water Monitoring Result at P4 - SOC
Mid-Ebb Tide**

Date	Time	Weather Condition	Sampling Depth		Water Temperature			pH			Salinity		DO Saturation		DO		Turbidity		Suspended Solids					
					°C			-			ppt		%		mg/L		NTU		mg/L					
					Value	Average		Value	Average		Value	Average	Value	Average	Value	Average	Value	Average	Value	Average				
2/10/2015	15:16	Fine	Middle	2.5	28.60	28.60	28.60	8.25	8.25	8.26	30.84	30.84	30.85	74.1	73.4	72.6	4.84	4.80	4.74	7.76	7.69	7.57	6	6.50
	15:18		Middle	2.5	28.60	28.60		8.26	8.26		30.85	30.85		72.3	70.6		4.72	4.61		7.48	7.36		7	
6/10/2015	8:48	Cloudy	Middle	2.5	27.80	27.80	27.80	8.30	8.30	8.30	31.63	32.63	31.88	73.6	73.1	72.8	4.85	4.81	4.80	8.22	8.21	8.13	4	3.50
	8:50		Middle	2.5	27.80	27.80		8.30	8.30		31.63	31.63		73.1	71.5		4.82	4.71		7.95	8.15		3	
8/10/2015	9:51	Fine	Middle	2.5	27.80	27.80	27.80	8.22	8.22	8.22	30.74	30.74	30.76	70.6	71.7	71.3	4.67	4.75	4.72	6.09	5.94	5.94	4	4.00
	9:53		Middle	2.5	27.80	27.80		8.22	8.22		30.77	30.77		72.2	70.6		4.78	4.68		5.93	5.80		4	
10/10/2015	10:40	Fine	Middle	2.5	27.40	27.40	27.40	8.30	8.31	8.31	31.97	31.97	31.98	75.9	75.7	75.6	5.02	5.01	5.00	9.91	9.94	9.86	8	7.50
	10:42		Middle	2.5	27.40	27.40		8.31	8.31		31.99	31.99		75.5	75.4		4.99	4.99		9.79	9.78		7	
12/10/2015	14:29	Cloudy	Middle	2.5	26.20	26.20	26.25	8.27	8.27	8.28	32.19	32.19	32.20	76.9	77.1	76.5	5.18	5.19	5.16	11.46	11.29	<u>11.23</u>	8	7.00
	14:31		Middle	2.5	26.30	26.30		8.28	8.28		32.20	32.21		76.5	75.6		5.16	5.09		11.10	11.06		6	
14/10/2015	13:58	Fine	Middle	2.5	27.10	27.10	27.10	8.29	8.29	8.30	32.36	32.36	32.36	75.6	76.8	75.4	5.01	5.10	5.00	9.94	9.94	<u>10.02</u>	7	6.50
	14:00		Middle	2.5	27.10	27.10		8.30	8.30		32.36	32.36		75.7	73.6		5.02	4.88		9.97	10.21		6	
16/10/2015	8:55	Fine	Middle	2.5	26.30	26.30	26.30	8.27	8.27	8.27	32.04	32.04	32.04	78.2	79.9	78.6	5.26	5.38	5.29	12.32	12.31	<u>12.28</u>	10	10.50
	8:57		Middle	2.5	26.30	26.30		8.27	8.27		32.04	32.04		78.7	77.4		5.30	5.21		12.28	12.22		11	
20/10/2015	4:50	Fine	Middle	2.5	25.40	25.40	25.40	8.24	8.24	8.25	32.26	32.26	32.26	73.5	74.5	74.0	5.02	5.07	5.05	7.86	7.94	7.88	4	4.50
	4:51		Middle	2.5	25.40	25.40		8.25	8.25		32.26	32.26		74.0	73.9		5.06	5.05		7.75	7.96		5	
22/10/2015	4:35	Cloudy	Middle	2.5	26.30	26.30	26.25	8.30	8.30	8.30	32.43	32.43	32.43	80.7	81.0	80.6	5.43	5.46	5.43	3.64	3.50	3.68	4	3.50
	4:36		Middle	2.5	26.20	26.20		8.30	8.30		32.43	32.43		80.1	80.6		5.39	5.43		3.82	3.77		3	
24/10/2015	9:47	Fine	Middle	2.5	27.00	27.00	27.05	8.30	8.30	8.30	32.39	32.39	32.39	71.6	71.0	70.7	4.76	4.71	4.70	7.32	7.41	7.18	7	6.00
	9:49		Middle	2.5	27.10	27.10		8.30	8.30		32.39	32.38		70.3	70.0		4.67	4.65		6.98	6.99		5	
26/10/2015	11:25	Cloudy	Middle	2.5	26.30	26.30	26.30	8.36	8.36	8.36	30.61	30.61	30.76	86.3	88.6	87.8	5.82	5.97	5.92	10.65	10.63	<u>10.64</u>	8	7.50
	11:27		Middle	2.5	26.30	26.30		8.36	8.36		30.90	30.90		88.4	87.8		5.96	5.92		10.63	10.65		7	

Remarks:
Single underline denotes exceedance over Action Level.
Double underline denotes exceedance over Limit Level.



**Water Monitoring Result at P5 - WCT / RT / IT
Mid-Ebb Tide**

Date	Time	Weater Condition	Sampling Depth		Water Temperature		pH		Salinity		DO Saturation		DO		Turbidity		Suspended Solids							
					°C		-		ppt		%		mg/L		NTU		mg/L							
					Value	Average	Value	Average	Value	Average	Value	Average	Value	Average	Value	Average	Value	Average	Value	Average				
28/9/2015	14:15	Sunny	Middle	2.0	28.70	28.70	28.70	8.28	8.28	8.28	30.78	30.78	30.78	77.5	77.7	77.3	5.06	5.06	5.04	7.96	7.87	7.89	7	7.50
	14:16		Middle	2.0	28.70	28.70		8.28	8.28		30.78	30.78		77.1	76.7		5.02	5.00		7.82	7.92		8	
30/9/2015	15:20	Fine	Middle	2.5	28.90	28.90	28.95	8.24	8.24	8.25	30.72	30.72	30.72	71.4	71.8	71.6	4.64	4.66	4.65	7.26	7.07	7.26	6	6.50
	15:22		Middle	2.5	29.00	29.00		8.25	8.25		30.71	30.71		71.1	72.0		4.62	4.67		7.43	7.26		7	

Remarks:
Single underline denotes exceedance over Action Level.
Double underline denotes exceedance over Limit Level.



**Water Monitoring Result at P5 - WCT / RT / IT
Mid-Ebb Tide**

Date	Time	Weather Condition	Sampling Depth		Water Temperature			pH			Salinity		DO Saturation		DO		Turbidity		Suspended Solids					
					°C		-		ppt		%		mg/L		NTU		mg/L							
					Value	Average	Value	Average	Value	Average	Value	Average	Value	Average	Value	Average	Value	Average	Value	Average				
2/10/2015	15:20	Fine	Middle	2.5	28.90	28.90	28.90	8.26	8.26	8.26	30.89	30.89	30.93	73.1	70.8	71.0	4.76	4.60	4.61	7.95	7.97	7.91	10	9.50
	15:22		Middle	2.5	28.90	28.90		8.26	8.26		30.97	30.97		69.3	70.9		4.50	4.57		7.89	7.83		9	
6/10/2015	8:52	Cloudy	Middle	2.5	27.90	27.90	27.90	8.30	8.30	8.31	31.45	31.45	31.52	77.9	78.7	77.5	5.13	5.18	5.10	8.78	8.78	8.81	3	3.50
	8:54		Middle	2.5	27.90	27.90		8.31	8.31		31.58	31.58		77.7	75.7		5.11	4.98		8.81	8.86		4	
8/10/2015	9:55	Fine	Middle	2.5	27.90	27.90	27.90	8.23	8.23	8.23	30.79	30.79	30.81	73.6	73.4	72.0	4.87	4.84	4.76	7.88	7.19	7.38	4	4.50
	9:57		Middle	2.5	27.90	27.90		8.23	8.23		30.82	30.82		71.1	70.0		4.70	4.62		7.28	7.18		5	
10/10/2015	10:44	Fine	Middle	2.5	27.50	27.50	27.50	8.30	8.30	8.31	31.99	31.99	32.00	72.7	71.4	71.3	4.82	4.71	4.71	10.55	10.55	10.59	8	8.00
	10:46		Middle	2.5	27.50	27.50		8.32	8.32		32.01	32.01		69.8	71.1		4.61	4.68		10.62	10.62		8	
12/10/2015	14:33	Cloudy	Middle	2.5	26.70	26.70	26.70	8.28	8.28	8.28	32.17	32.17	32.18	73.0	71.7	71.3	4.88	4.79	4.77	11.30	11.31	<u>10.97</u>	7	8.00
	14:35		Middle	2.5	26.70	26.70		8.28	8.28		32.19	32.19		70.5	70.1		4.71	4.69		10.62	10.63		9	
14/10/2015	14:02	Fine	Middle	2.5	27.50	27.50	27.50	8.29	8.29	8.29	32.21	32.21	32.27	69.2	68.0	68.0	4.57	4.49	4.49	12.06	12.17	<u>12.14</u>	8	8.50
	14:04		Middle	2.5	27.50	27.50		8.29	8.29		32.32	32.32		67.2	67.4		4.43	4.45		12.17	12.16		9	
16/10/2015	9:00	Fine	Middle	2.5	26.30	26.30	26.30	8.28	8.28	8.28	32.01	32.01	32.05	78.6	81.3	80.8	5.30	5.48	5.45	17.38	17.50	<u>17.37</u>	13	12.50
	9:02		Middle	2.5	26.30	26.30		8.28	8.28		32.08	32.08		81.5	81.8		5.49	5.51		17.31	17.28		12	
20/10/2015	5:20	Fine	Middle	2.5	25.50	25.50	25.50	8.14	8.14	8.15	32.32	32.32	32.33	72.5	72.6	72.3	4.95	4.96	4.93	4.85	4.65	4.78	5	4.50
	5:21		Middle	2.5	25.50	25.50		8.16	8.16		32.33	32.33		72.0	71.9		4.91	4.91		4.81	4.79		4	
22/10/2015	4:41	Cloudy	Middle	2.5	26.40	26.40	26.35	8.30	8.30	8.30	32.43	32.43	32.43	76.8	77.1	76.5	5.16	5.18	5.15	2.91	2.86	2.84	5	4.50
	4:42		Middle	2.5	26.30	26.30		8.30	8.30		32.43	32.43		76.4	75.8		5.14	5.10		2.81	2.77		4	
24/10/2015	9:51	Fine	Middle	2.5	27.10	27.10	27.10	8.30	8.30	8.30	32.32	32.32	32.35	74.1	72.2	71.8	4.92	4.76	4.75	8.07	7.78	7.85	7	6.50
	9:53		Middle	2.5	27.10	27.10		8.30	8.30		32.38	32.38		70.4	70.3		4.67	4.66		7.70	7.86		6	
26/10/2015	11:30	Cloudy	Middle	2.5	26.70	26.70	26.75	8.36	8.36	8.36	32.45	32.45	32.46	79.3	80.8	82.2	5.30	5.40	5.49	9.86	9.82	<u>9.85</u>	9	8.50
	11:32		Middle	2.5	26.80	26.80		8.36	8.36		32.46	32.46		84.3	84.3		5.63	5.63		9.80	9.92		8	

Remarks:
Single underline denotes exceedance over Action Level.
Double underline denotes exceedance over Limit Level.



**Water Monitoring Result at RW21-P789 - Sun Hung Kai Centre
Mid-Ebb Tide**

Date	Time	Weater Condition	Sampling Depth		Water Temperature		pH		Salinity		DO Saturation		DO		Turbidity		Suspended Solids							
					°C		-		ppt		%		mg/L		NTU		mg/L							
					Value	Average	Value	Average	Value	Average	Value	Average	Value	Average	Value	Average	Value	Average	Value	Average				
28/9/2015	10:50	Sunny	Middle	3.5	29.60	29.60	29.60	8.28	8.28	8.28	32.06	32.06	32.06	71.2	71.6	71.0	4.55	4.58	4.54	8.46	8.51	8.45	9	9.50
	10:51		Middle	3.5	29.60	29.60		8.28	8.28		32.05	32.05		70.8	70.5		4.52	4.50		8.58	8.26		10	
30/9/2015	15:35	Fine	Middle	3.5	29.50	29.50	29.55	8.24	8.24	8.24	31.28	31.27	31.27	64.4	63.2	63.7	4.13	4.05	4.08	8.17	8.15	8.13	9	8.00
	15:37		Middle	3.5	29.60	29.60		8.24	8.24		31.26	31.26		63.0	64.0		4.04	4.10		8.14	8.04		7	

Remarks:
Single underline denotes exceedance over Action Level.
Double underline denotes exceedance over Limit Level.



**Water Monitoring Result at RW21-P789 - Sun Hung Kai Centre
Mid-Ebb Tide**

Date	Time	Weather Condition	Sampling Depth		Water Temperature			pH			Salinity		DO Saturation		DO		Turbidity		Suspended Solids					
					°C		-		ppt		%		mg/L		NTU		mg/L							
					Value	Average	Value	Average	Value	Average	Value	Average	Value	Average	Value	Average	Value	Average	Value	Average				
2/10/2015	15:40	Fine	Middle	3.5	28.90	28.90	28.85	8.24	8.24	8.25	31.14	31.14	31.15	78.1	75.7	77.3	5.07	4.91	5.02	8.08	8.05	8.04	8	8.50
	15:42		Middle	3.5	28.80	28.80		8.26	8.26		31.15	31.15		77.7	77.8		5.04	5.05		8.03	8.00		9	
6/10/2015	9:20	Cloudy	Middle	3.5	27.80	27.80	27.80	8.28	8.28	8.29	31.53	31.53	31.55	72.6	71.7	72.1	4.78	4.72	4.75	11.96	11.87	<u>11.84</u>	9	9.50
	9:22		Middle	3.5	27.80	27.80		8.29	8.29		31.56	31.56		71.8	72.3		4.73	4.76		11.81	11.70		10	
8/10/2015	10:10	Fine	Middle	3.5	28.20	28.20	28.20	8.23	8.23	8.24	30.98	30.98	30.99	71.3	73.5	72.4	4.68	4.83	4.76	7.25	7.26	7.28	6	6.00
	10:12		Middle	3.5	28.20	28.20		8.24	8.24		31.00	31.00		73.1	71.8		4.81	4.72		7.29	7.32		6	
10/10/2015	11:02	Fine	Middle	3.5	27.60	27.60	27.55	8.29	8.29	8.30	31.81	31.81	31.82	72.9	72.9	73.0	4.83	4.82	4.82	9.15	9.14	<u>9.16</u>	8	7.50
	11:04		Middle	3.5	27.50	27.50		8.31	8.30		31.82	31.82		73.9	72.2		4.86	4.77		9.18	9.17		7	
12/10/2015	11:39	Cloudy	Middle	3.5	26.50	26.50	26.50	8.22	8.22	8.24	32.20	32.20	32.21	75.8	75.3	75.9	5.08	5.05	5.07	9.94	9.94	<u>9.96</u>	5	4.50
	11:41		Middle	3.5	26.50	26.50		8.26	8.26		32.22	32.22		75.6	76.9		5.07	5.06		9.96	10.01		4	
14/10/2015	14:26	Fine	Middle	3.5	27.60	27.60	27.70	8.24	8.24	8.26	32.34	32.34	32.31	75.8	73.8	73.6	4.98	4.86	4.84	7.77	7.76	7.73	5	5.50
	14:28		Middle	3.5	27.80	27.80		8.28	8.28		32.28	32.28		72.0	72.6		4.74	4.77		7.70	7.68		6	
16/10/2015	9:15	Fine	Middle	3.5	26.90	26.90	26.90	8.26	8.26	8.26	32.01	32.01	32.02	89.3	89.6	88.6	5.95	5.97	5.90	11.17	11.08	<u>11.08</u>	9	8.00
	9:17		Middle	3.5	26.90	26.90		8.26	8.26		32.02	32.02		88.0	87.4		5.86	5.82		11.04	11.02		7	
20/10/2015	2:30	Fine	Middle	3.5	25.60	25.60	25.55	8.26	8.26	8.26	32.47	32.47	32.47	73.4	73.7	73.1	5.00	5.02	4.99	6.50	6.52	6.40	6	5.50
	2:31		Middle	3.5	25.50	25.50		8.26	8.26		32.47	32.47		72.9	72.5		5.00	4.94		6.31	6.28		5	
22/10/2015	4:05	Cloudy	Middle	3.5	26.20	26.20	26.20	8.22	8.22	8.23	32.40	32.40	32.41	76.4	77.1	76.7	5.15	5.20	5.17	2.15	2.52	2.42	3	3.50
	4:06		Middle	3.5	26.20	26.20		8.23	8.23		32.41	32.41		76.8	76.5		5.18	5.16		2.58	2.41		4	
24/10/2015	10:10	Fine	Middle	3.5	27.40	27.40	27.45	8.30	8.30	8.30	32.30	32.30	32.30	69.5	70.1	69.2	4.59	4.63	4.57	6.43	6.42	6.42	4	5.00
	10:12		Middle	3.5	27.50	27.50		8.30	8.30		32.29	32.29		69.1	68.2		4.57	4.50		6.42	6.42		6	
26/10/2015	11:50	Cloudy	Middle	3.0	26.40	26.40	26.40	8.30	8.33	8.33	32.60	32.60	32.61	85.1	87.1	86.3	5.71	5.84	5.78	8.51	8.55	<u>8.55</u>	7	7.00
	11:52		Middle	3.0	26.40	26.40		8.35	8.35		32.61	32.61		86.3	86.5		5.78	5.80		8.56	8.56		7	

Remarks:
Single underline denotes exceedance over Action Level.
Double underline denotes exceedance over Limit Level.



**Water Monitoring Result at WSD19 - Sheung Wan
Mid-Ebb Tide**

Date	Time	Weather Condition	Sampling Depth		Water Temperature		pH		Salinity		DO Saturation		DO		Turbidity		Suspended Solids							
					°C		-		ppt		%		mg/L		NTU		mg/L							
					Value	Average	Value	Average	Value	Average	Value	Average	Value	Average	Value	Average	Value	Average	Value	Average				
28/9/2015	13:30	Sunny	Middle	2.0	29.70	29.70	29.65	8.27	8.27	8.27	30.52	30.52	30.53	78.2	78.1	77.6	5.03	5.03	5.00	17.93	17.19	<u>17.29</u>	15	15.50
	13:31		Middle	2.0	29.60	29.60		8.27	8.27		30.53	30.53		77.3	76.9		4.97	4.95		17.04	17.01		16	
30/9/2015	14:06	Fine	Middle	3.5	30.50	30.50	30.55	8.26	8.26	8.26	30.38	30.38	30.35	76.3	73.9	74.2	4.85	4.69	4.71	10.36	10.35	<u>10.31</u>	5	5.50
	14:08		Middle	3.5	30.60	30.60		8.25	8.25		30.32	30.32		72.5	74.2		4.60	4.71		10.27	10.25		6	

Remarks:
Single underline denotes exceedance over Action Level.
Double underline denotes exceedance over Limit Level.



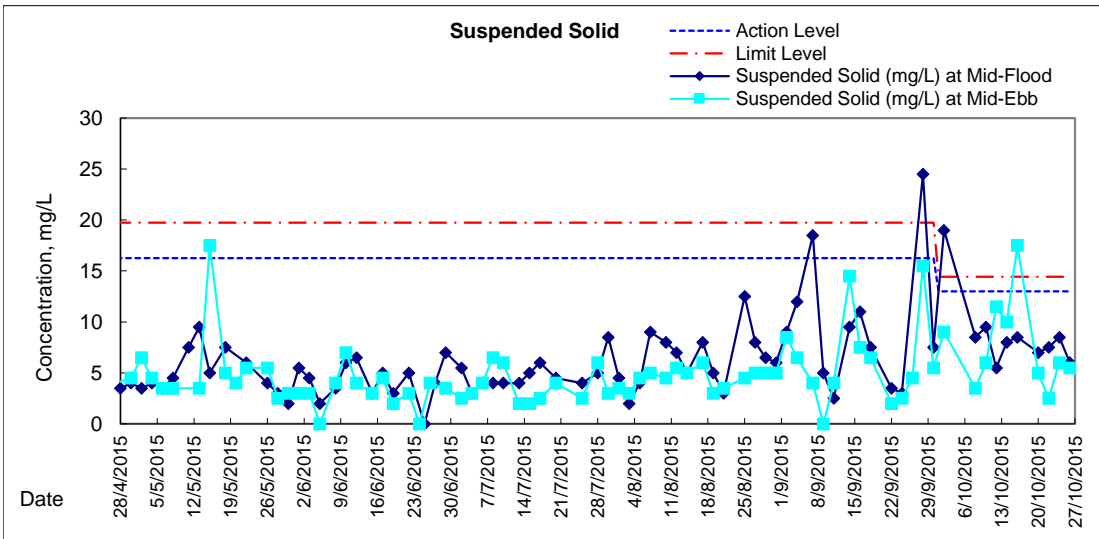
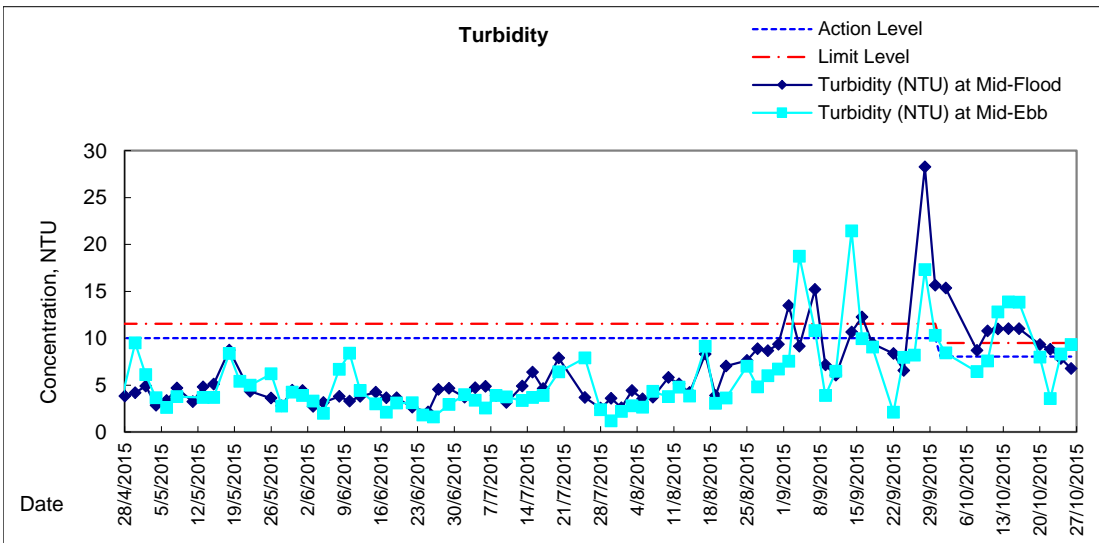
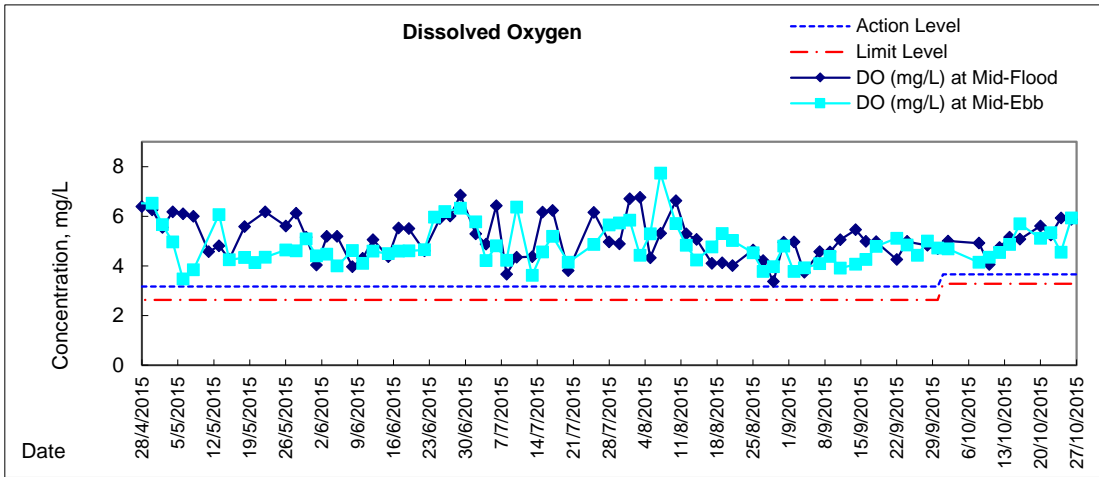
**Water Monitoring Result at WSD19 - Sheung Wan
Mid-Ebb Tide**

Date	Time	Weather Condition	Sampling Depth		Water Temperature			pH			Salinity		DO Saturation		DO		Turbidity		Suspended Solids					
					°C			-			ppt		%		mg/L		NTU		mg/L					
					Value	Average		Value	Average		Value	Average	Value	Average	Value	Average	Value	Average	Value	Average				
2/10/2015	14:15	Fine	Middle	3.5	28.60	28.60	28.55	8.29	8.29	8.29	30.66	30.66	30.67	71.7	71.9	71.8	4.67	4.70	4.69	8.40	8.39	<u>8.41</u>	10	9.00
	14:17		Middle	3.5	28.50	28.50		8.28	8.28		30.67	30.67		72.0	71.4		4.71	4.67		8.42	8.42		8	
6/10/2015	7:15	Cloudy	Middle	3.5	27.50	27.50	27.50	8.26	8.26	8.27	31.13	31.13	31.15	64.5	64.4	64.5	4.28	4.27	4.28	6.42	6.41	6.39	2	2.50
	7:17		Middle	3.5	27.50	27.50		8.27	8.27		31.16	31.16		64.4	64.6		4.28	4.29		6.38	6.36		3	
8/10/2015	8:42	Fine	Middle	3.5	27.80	27.80	27.85	8.19	8.19	8.20	30.39	30.39	30.40	62.5	62.7	62.9	4.07	4.15	4.15	6.42	6.42	6.43	4	3.50
	8:44		Middle	3.5	27.90	27.90		8.21	8.21		30.40	30.40		63.3	62.9		4.19	4.17		6.43	6.45		3	
10/10/2015	9:52	Fine	Middle	3.5	27.60	27.60	27.60	8.24	8.24	8.25	31.71	31.71	31.73	66.7	64.8	64.6	4.37	4.28	4.34	7.49	7.55	7.57	6	6.00
	9:54		Middle	3.5	27.60	27.60		8.26	8.26		31.74	31.74		64.6	62.4		4.27	4.45		7.60	7.65		6	
12/10/2015	10:28	Cloudy	Middle	3.5	26.70	26.70	26.65	8.17	8.17	8.19	32.13	32.13	32.17	69.5	68.9	67.9	4.65	4.61	4.54	12.83	12.80	<u>12.80</u>	11	11.50
	10:30		Middle	3.5	26.60	26.60		8.21	8.20		32.20	32.20		67.2	65.9		4.50	4.41		12.79	12.79		12	
14/10/2015	10:54	Fine	Middle	3.5	27.10	27.10	27.10	8.26	8.26	8.27	32.72	32.72	32.72	74.2	73.5	73.5	4.91	4.86	4.87	13.89	13.89	<u>13.85</u>	10	10.00
	10:56		Middle	3.5	27.10	27.10		8.28	8.28		32.71	32.71		73.7	72.7		4.88	4.81		13.88	13.72		10	
16/10/2015	7:50	Fine	Middle	3.5	26.50	26.50	26.40	8.42	8.42	8.44	32.34	32.34	32.36	84.0	85.0	84.8	5.64	5.71	5.70	13.85	13.79	<u>13.83</u>	17	<u>17.50</u>
	7:52		Middle	3.5	26.30	26.30		8.46	8.46		32.37	32.37		85.9	84.3		5.77	5.66		13.83	13.86		18	
20/10/2015	3:00	Fine	Middle	3.0	25.50	25.50	25.50	8.30	8.30	8.30	32.19	32.19	32.20	74.7	75.1	74.7	5.12	5.13	5.11	7.98	8.01	7.99	5	5.00
	3:01		Middle	3.0	25.50	25.50		8.30	8.30		32.20	32.20		74.6	74.3		5.10	5.08		8.00	7.96		5	
22/10/2015	5:30	Cloudy	Middle	2.5	26.00	26.00	26.00	8.13	8.13	8.14	32.24	32.24	32.24	79.3	79.5	78.8	5.37	5.38	5.34	3.52	3.49	3.54	3	2.50
	5:31		Middle	2.5	26.00	26.00		8.14	8.14		32.24	32.24		77.9	78.4		5.28	5.31		3.54	3.59		2	
24/10/2015	8:55	Fine	Middle	3.5	26.90	26.90	26.88	8.24	8.24	8.26	32.20	32.20	32.25	70.0	68.3	68.3	4.66	4.58	4.55	8.25	8.32	<u>8.31</u>	6	6.00
	8:57		Middle	3.5	26.90	26.80		8.27	8.27		32.29	32.29		67.8	66.9		4.50	4.46		8.34	8.34		6	
26/10/2015	10:20	Cloudy	Middle	3.5	25.90	25.90	25.85	8.28	8.28	8.30	31.15	31.15	31.15	88.4	87.1	87.0	6.02	5.93	5.93	9.40	9.22	<u>9.31</u>	5	5.50
	10:22		Middle	3.5	25.80	25.80		8.32	8.32		31.15	31.15		87.3	85.2		5.95	5.82		9.30	9.31		6	

Remarks:
Single underline denotes exceedance over Action Level.
Double underline denotes exceedance over Limit Level.

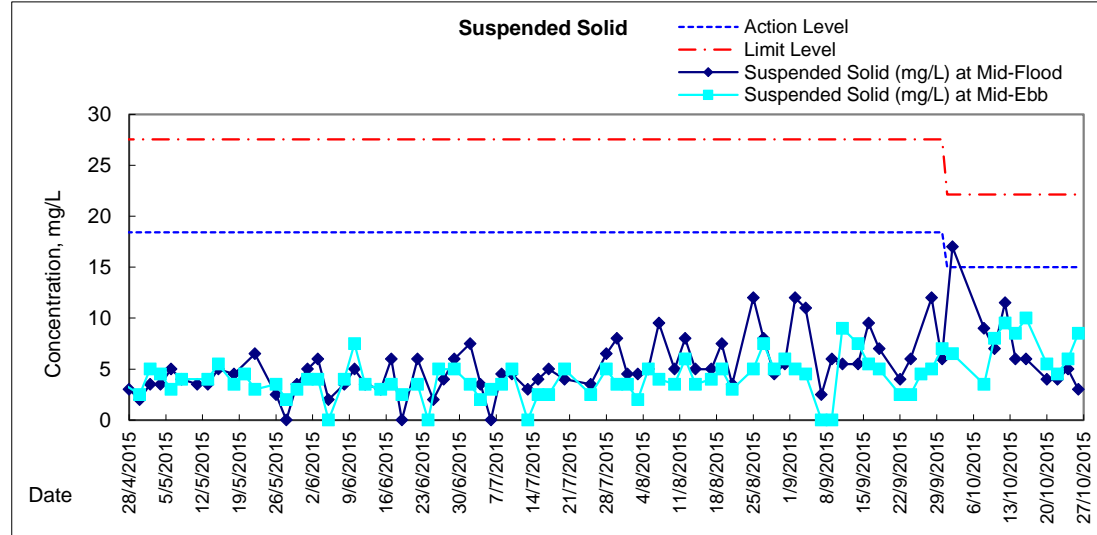
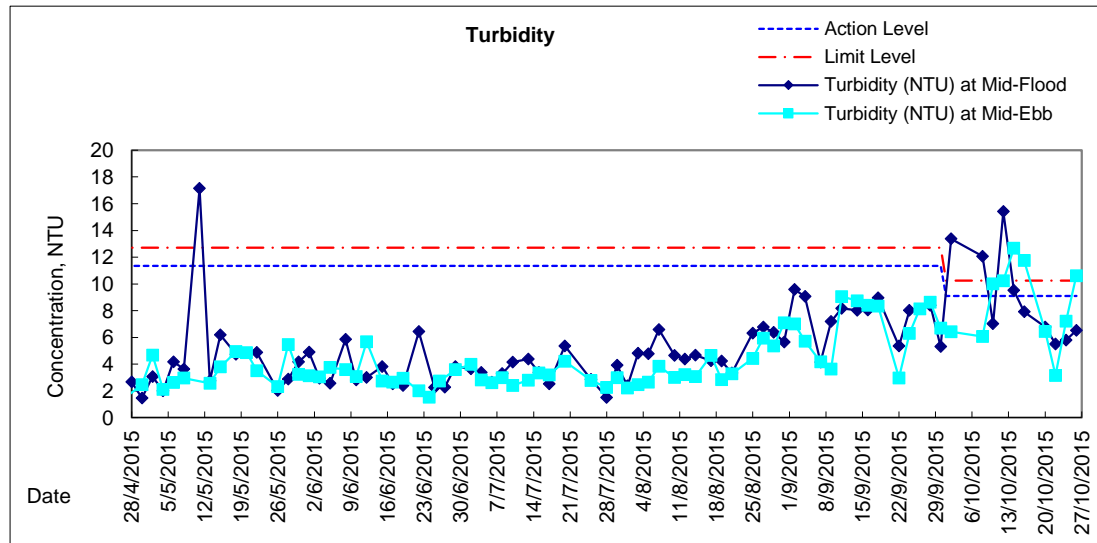
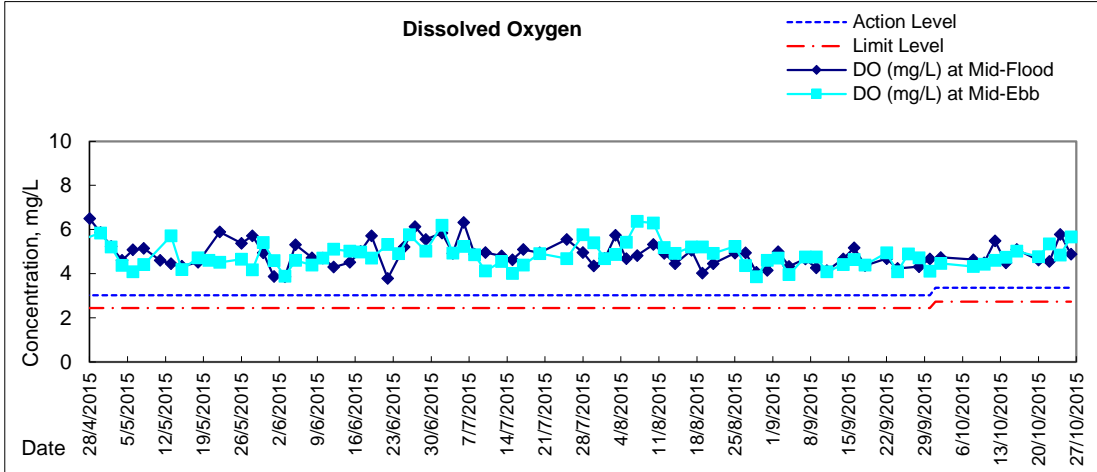


Graphic Presentation of Water Quality Result of WSD19 - Sheung Wan



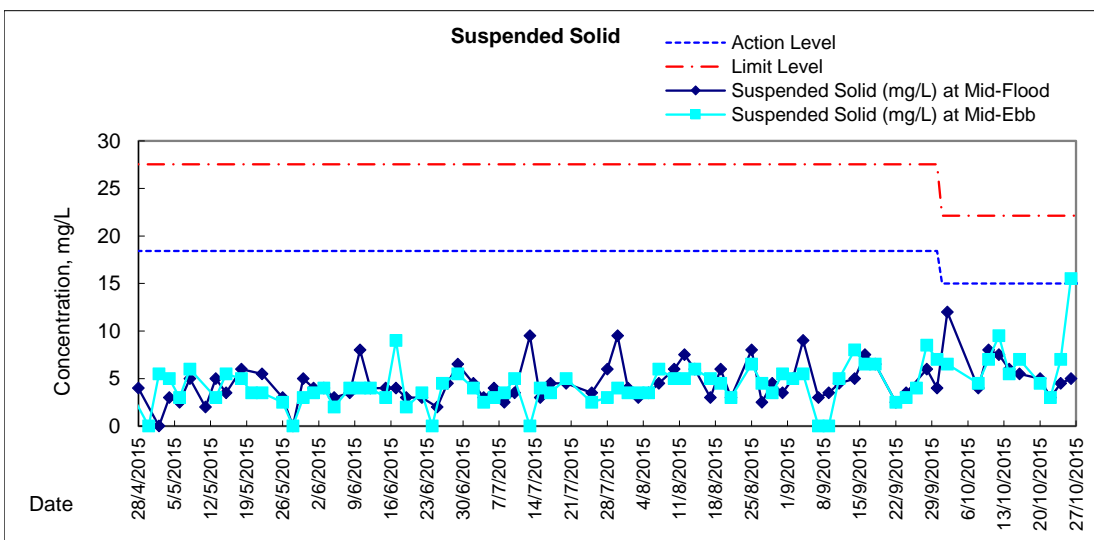
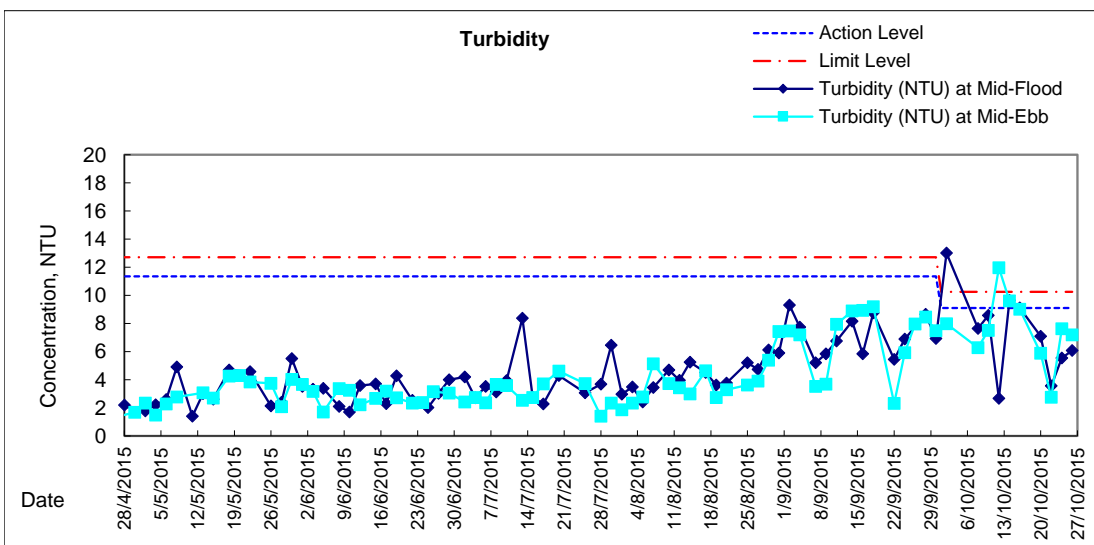
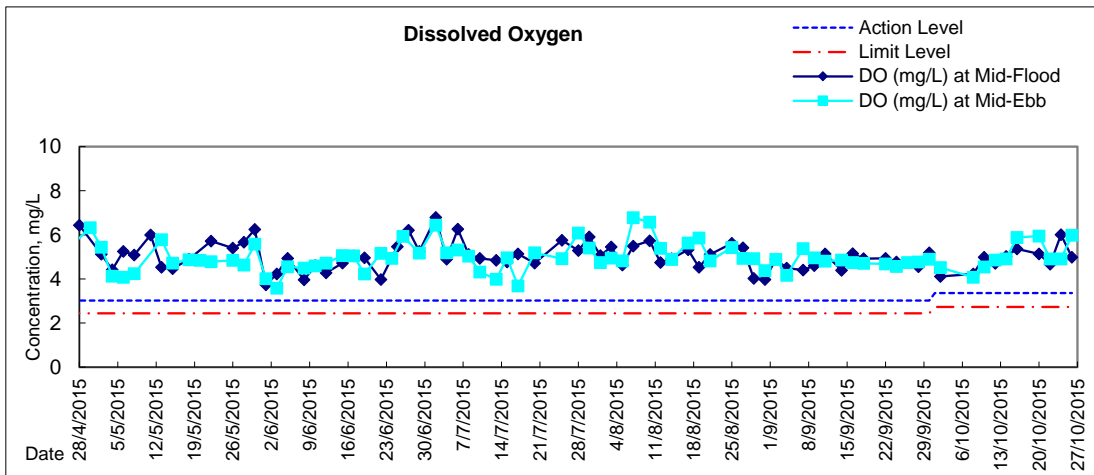


Graphic Presentation of Water Quality Result of C1 - HKCEC



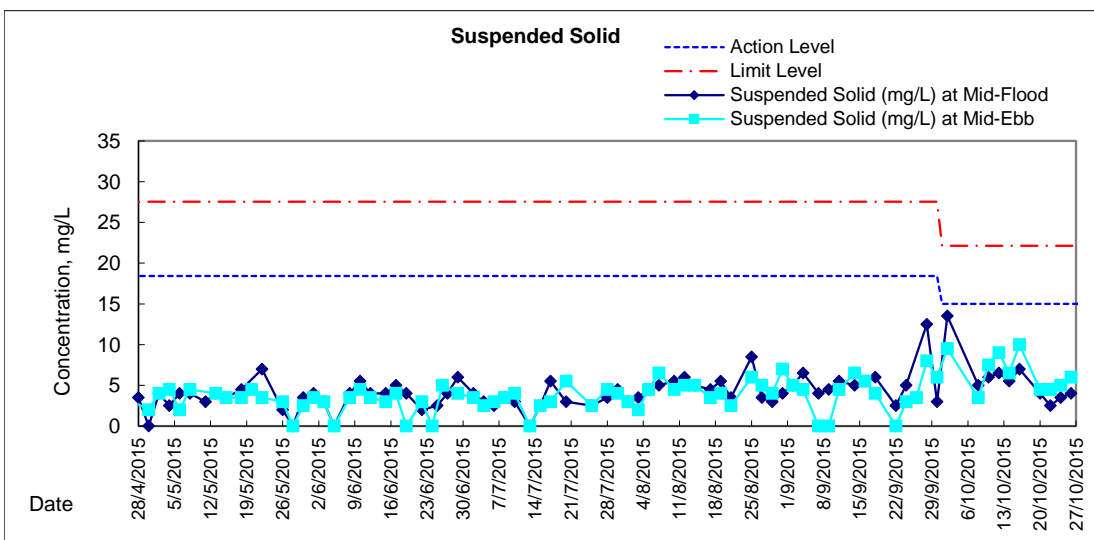
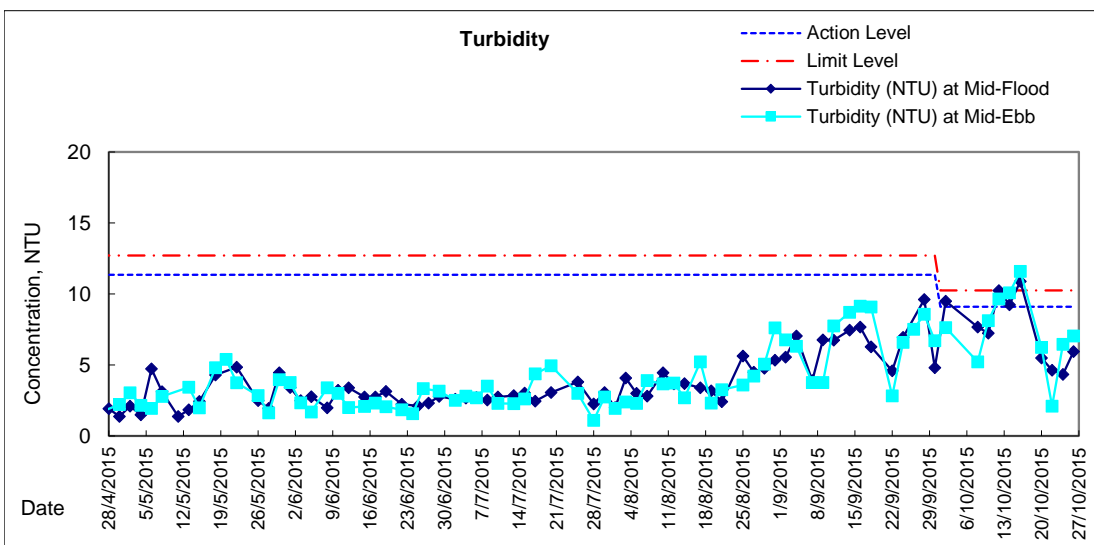
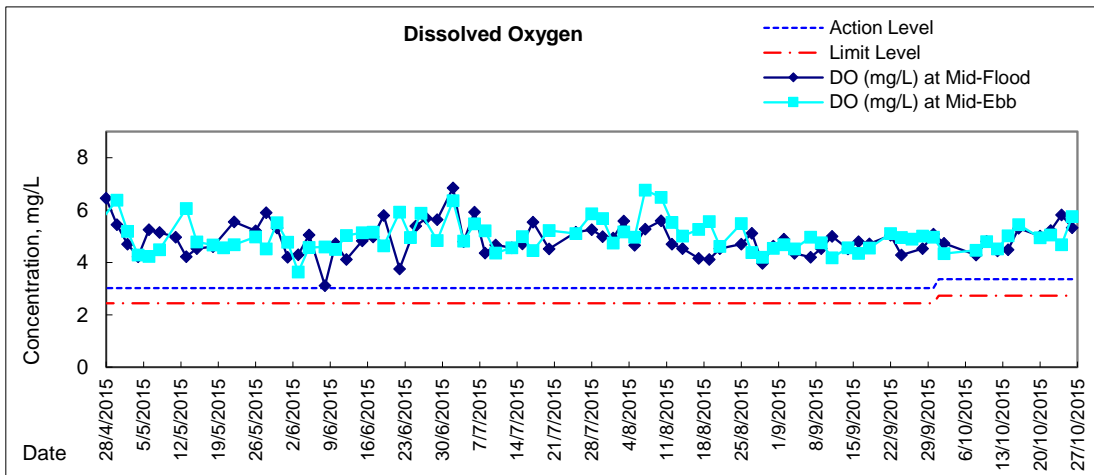


Graphic Presentation of Water Quality Result of P1 - HKCEC Phase I



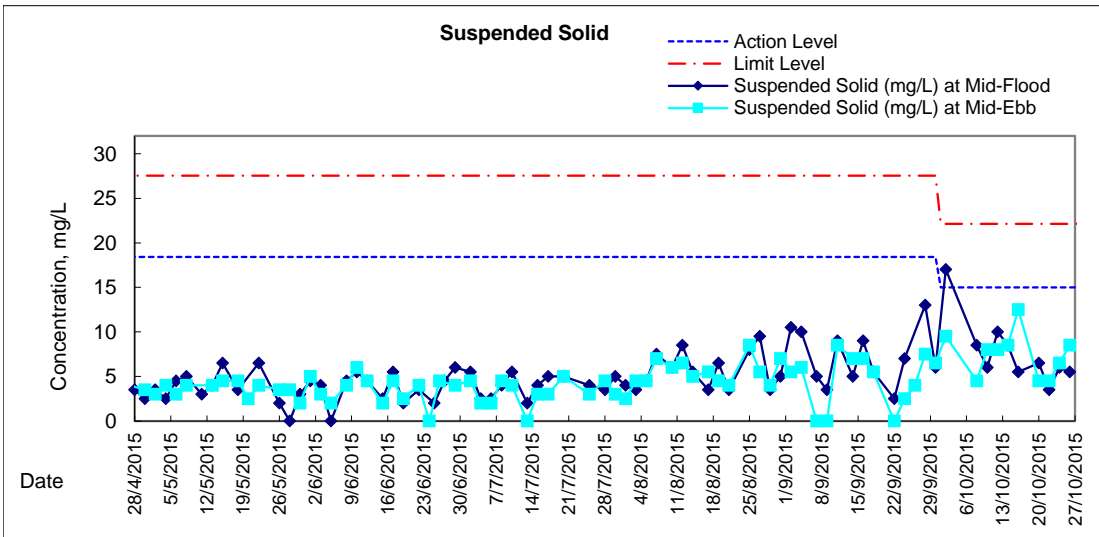
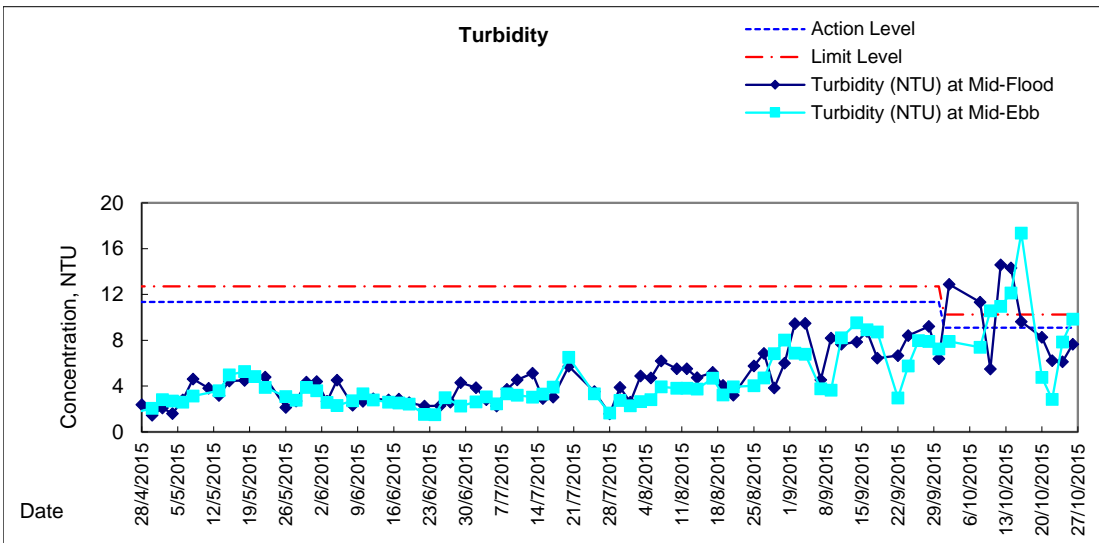
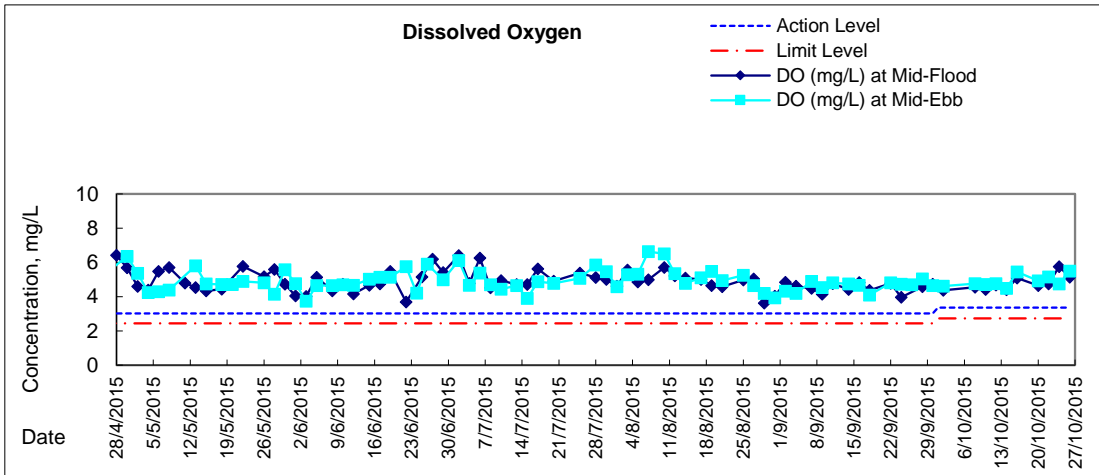


Graphic Presentation of Water Quality Result of P3 - APA



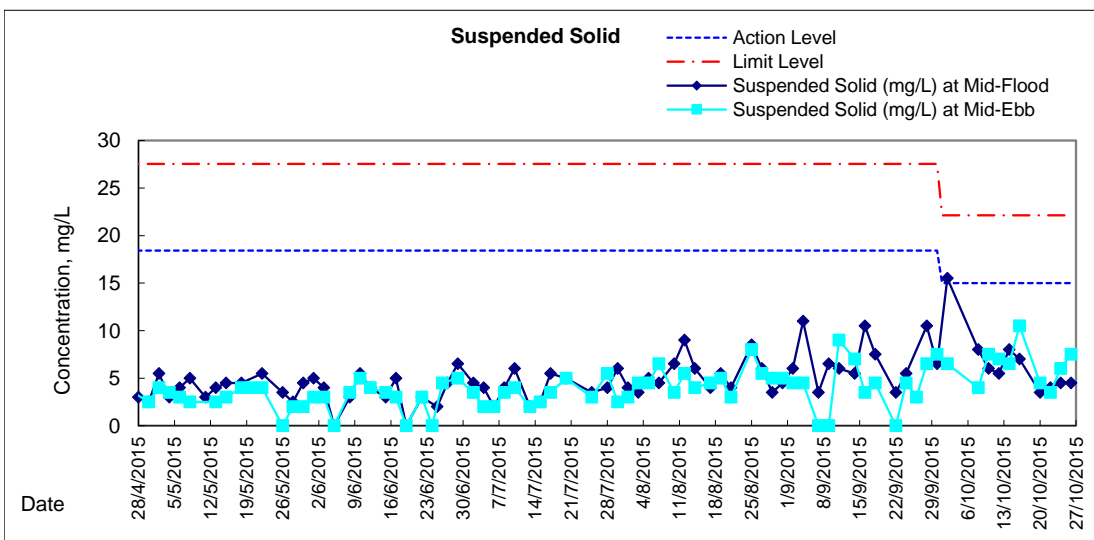
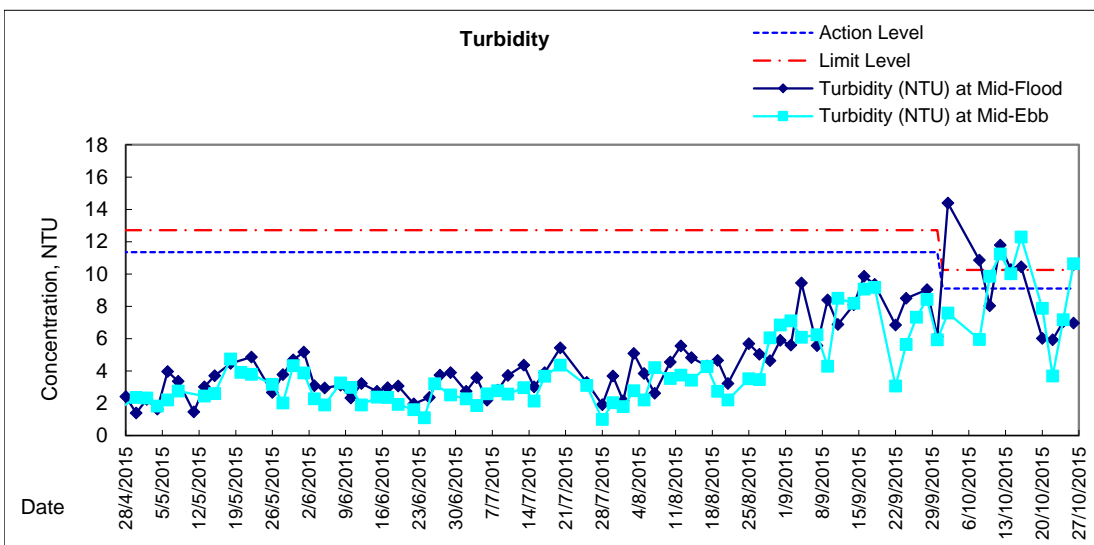
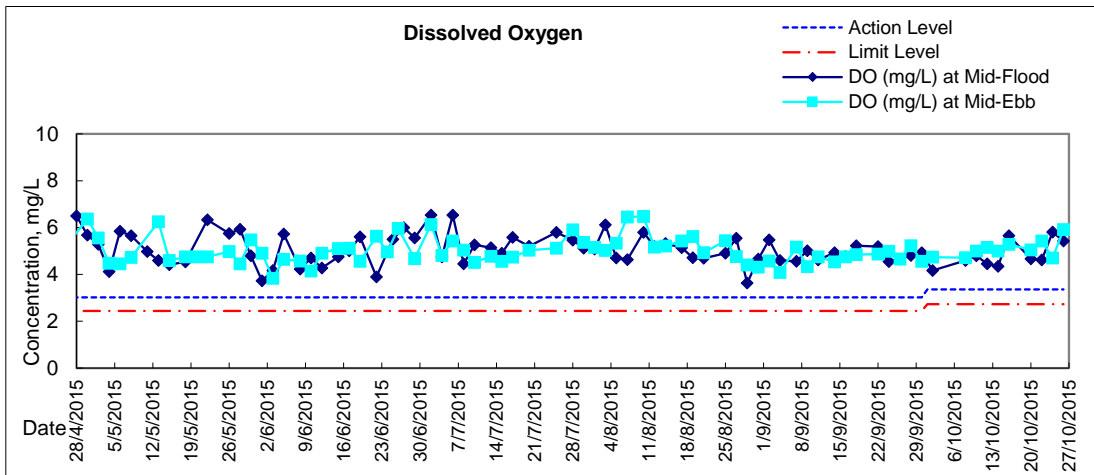


Graphic Presentation of Water Quality Result of P5 - WCT / RT / IT



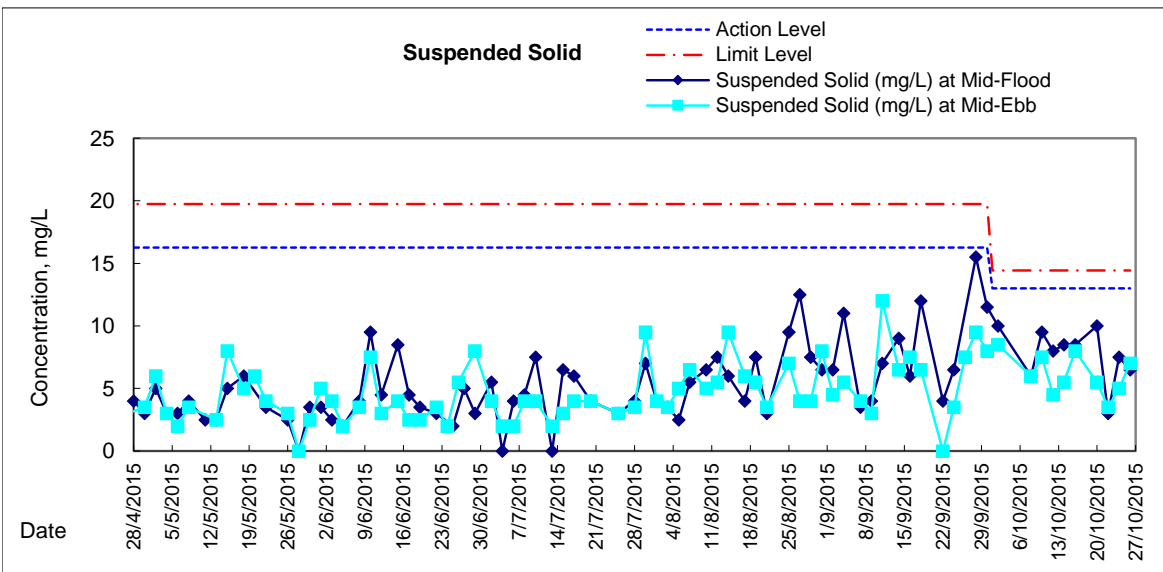
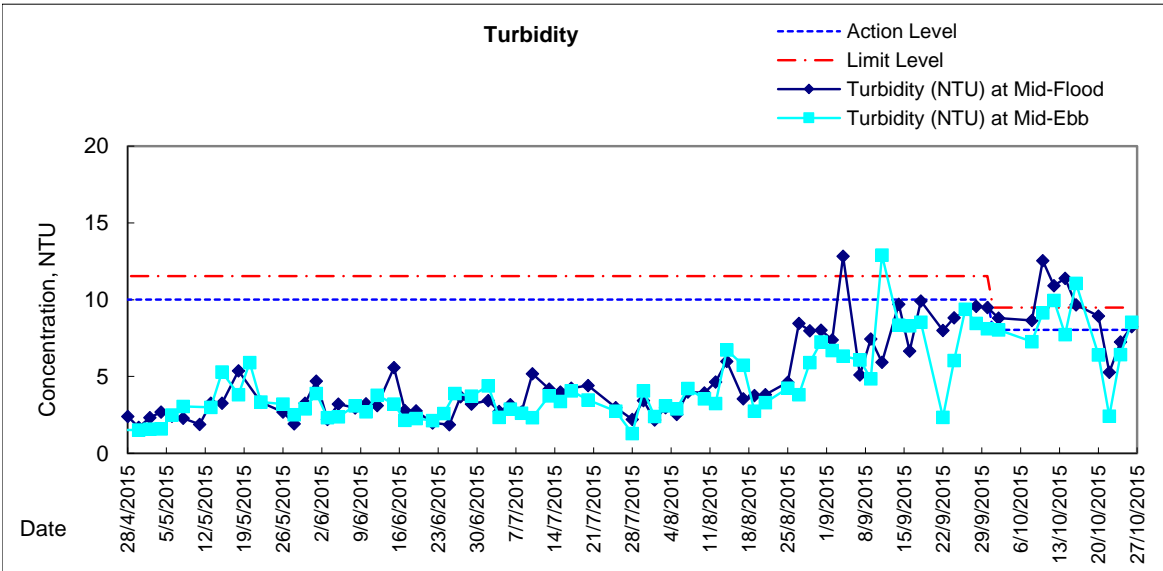
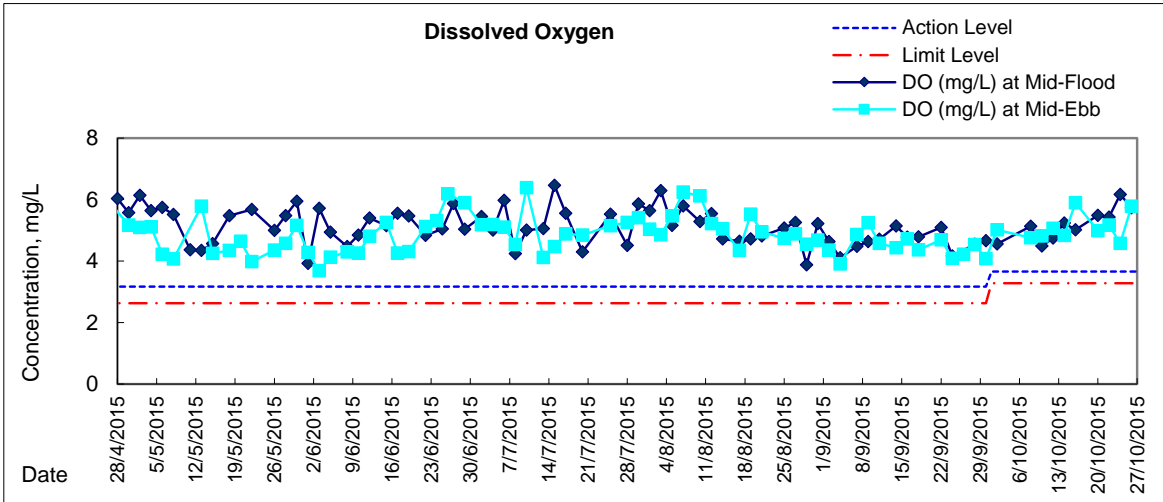


Graphic Presentation of Water Quality Result of P4 - SOC



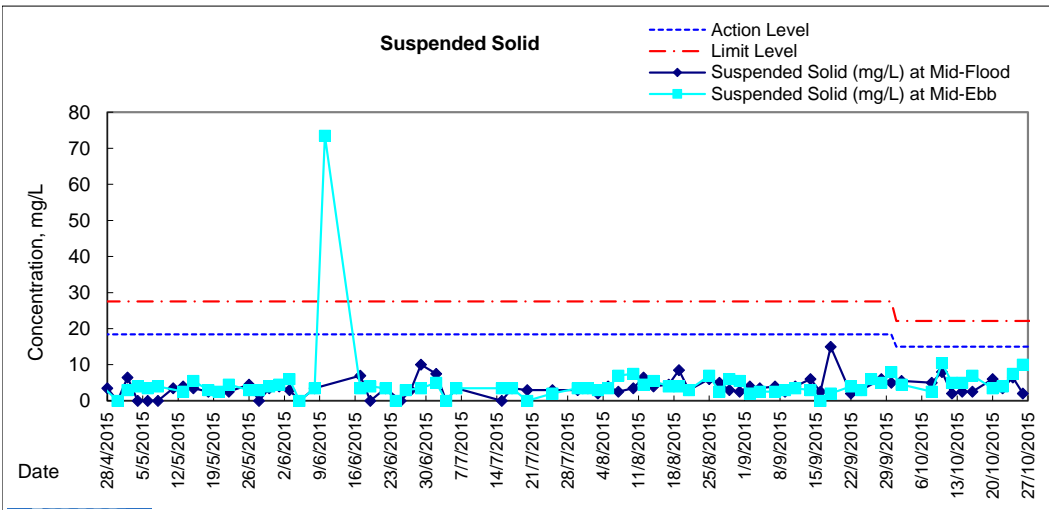
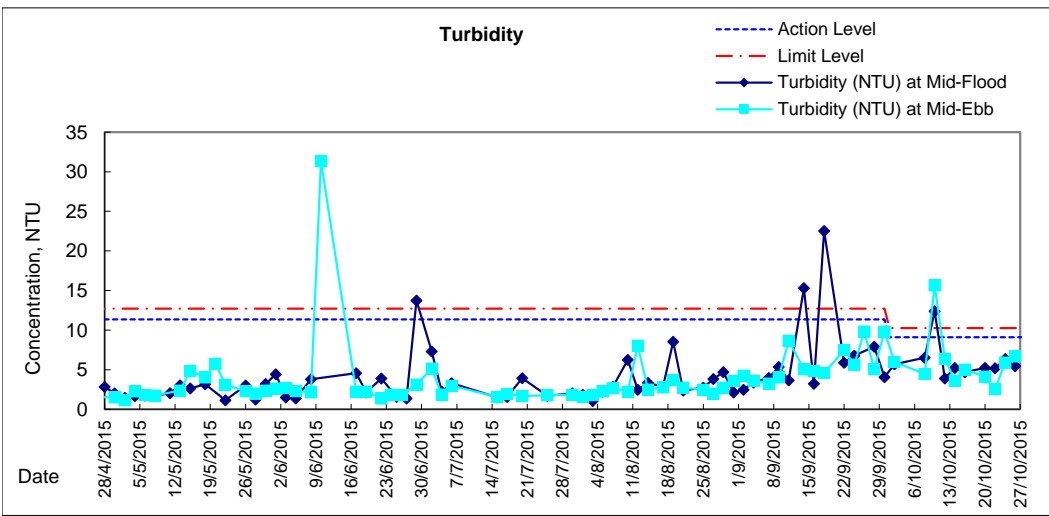
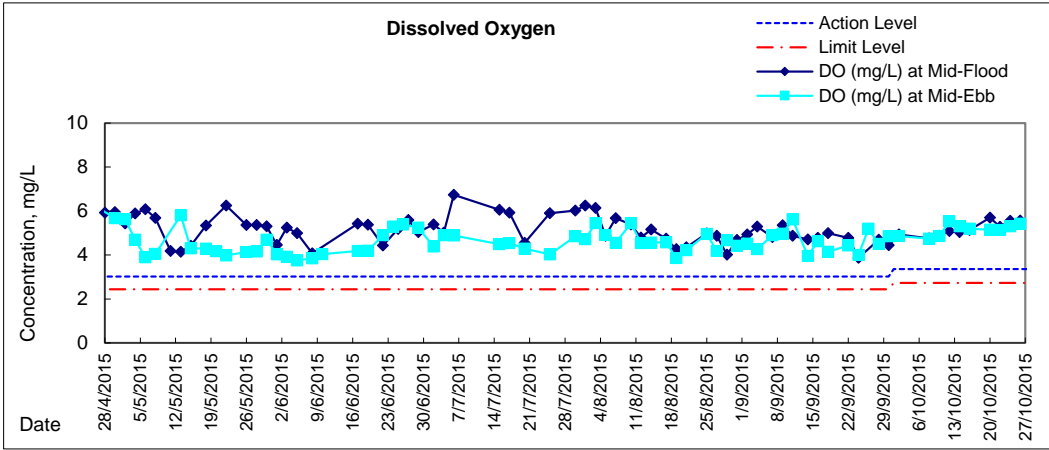


Graphic Presentation of Water Quality Result of RW21-P789 - GEC/CRC/SHK





Graphic Presentation of Water Quality Result of C7 - Windsor House





**Water Monitoring Result at C6 - Excelsior Hotel
Mid-Flood Tide**

Date	Time	Weater Condition	Sampling Depth		Water Temperature			pH			Salinity			DO Saturation			DO		
					°C			-			ppt			%			mg/L		
					Value	Average		Value	Average		Value	Average		Value	Average		Value	Average	
28/9/2015	-	Sunny	Surface	-	-	-	-	-	-	-	-	-	-	-	-	-	-	-	-
	19:06		Middle	1.5	28.10	28.10	28.1	8.13	8.13	8.1	29.11	29.11	29.1	52.1	53.7	52.9	3.46	3.58	3.52
	-		Bottom	-	-	-	-	-	-	-	-	-	-	-	-	-	-	-	-
30/9/2015	-	Cloudy	Surface	-	-	-	-	-	-	-	-	-	-	-	-	-	-	-	-
	18:42		Middle	1.0	28.90	28.90	28.9	8.21	8.21	8.2	29.86	29.86	29.9	62.4	62.7	62.6	4.08	4.09	4.09
	-		Bottom	-	-	-	-	-	-	-	-	-	-	-	-	-	-	-	-

Remarks:
 Single underline denotes exceedance over Action Level.
 Double underline denotes exceedance over Limit Level.



**Water Monitoring Result at C6 - Excelsior Hotel
Mid-Flood Tide**

Date	Time	Weather Condition	Sampling Depth		Water Temperature			pH			Salinity		DO Saturation		DO				
					°C			-		ppt		%		mg/L					
			m	Value	Average	Value	Average	Value	Average	Value	Average	Value	Average						
2/10/2015	-	Fine	Surface	-	-	-	-	-	-	-	-	-	-	-	-	-	-	-	
	10:47		Middle	1.5	28.50	28.50	28.5	8.16	8.16	8.2	30.12	30.12	30.1	63.4	62.8	63.1	4.16	4.12	4.14
	-		Bottom	-	-	-	-	-	-	-	-	-	-	-	-	-	-	-	-
6/10/2015	-	Cloudy	Surface	-	-	-	-	-	-	-	-	-	-	-	-	-	-	-	-
	12:25		Middle	1.5	27.60	27.60	27.6	8.25	8.25	8.3	26.66	26.66	26.7	51.2	52.8	52.0	3.46	3.59	3.53
	-		Bottom	-	-	-	-	-	-	-	-	-	-	-	-	-	-	-	-
8/10/2015	-	Fine	Surface	-	-	-	-	-	-	-	-	-	-	-	-	-	-	-	-
	16:18		Middle	1.0	28.50	28.50	28.5	8.16	8.16	8.2	29.77	29.77	29.8	59.3	58.4	58.9	3.90	3.84	3.87
	-		Bottom	-	-	-	-	-	-	-	-	-	-	-	-	-	-	-	-
10/10/2015	-	Cloudy	Surface	-	-	-	-	-	-	-	-	-	-	-	-	-	-	-	-
	17:15		Middle	1.0	27.40	27.40	27.4	8.03	8.03	8.0	30.26	30.26	30.3	69.5	69.2	69.4	4.64	4.62	4.63
	-		Bottom	-	-	-	-	-	-	-	-	-	-	-	-	-	-	-	-
12/10/2015	16:55	Cloudy	Surface	1.0	26.50	26.50	26.5	8.23	8.23	8.2	30.52	30.52	30.5	56.8	57.3	57.1	3.84	3.87	3.86
	-		Middle	2.0	-	-	-	-	-	-	-	-	-	-	-	-	-	-	-
	16:59		Bottom	3.0	26.70	26.70	26.7	8.24	8.24	8.2	30.93	30.93	30.9	72.3	70.0	71.2	4.88	4.71	4.80
14/10/2015	-	Fine	Surface	-	-	-	-	-	-	-	-	-	-	-	-	-	-	-	-
	18:55		Middle	1.0	26.20	26.20	26.2	8.23	8.22	8.2	30.51	30.51	30.5	69.2	69.0	69.1	4.71	4.69	4.70
	-		Bottom	-	-	-	-	-	-	-	-	-	-	-	-	-	-	-	-
16/10/2015	-	Fine	Surface	-	-	-	-	-	-	-	-	-	-	-	-	-	-	-	-
	15:15		Middle	1.5	27.70	27.70	27.7	8.16	8.16	8.2	30.89	30.89	30.9	66.1	65.1	65.6	4.38	4.31	4.35
	-		Bottom	-	-	-	-	-	-	-	-	-	-	-	-	-	-	-	-
20/10/2015	-	Fine	Surface	-	-	-	-	-	-	-	-	-	-	-	-	-	-	-	-
	11:50		Middle	1.5	27.50	27.50	27.5	8.24	8.24	8.2	29.90	29.90	29.9	57.7	57.2	57.5	3.86	3.85	3.86
	-		Bottom	-	-	-	-	-	-	-	-	-	-	-	-	-	-	-	-
22/10/2015	-	Fine	Surface	-	-	-	-	-	-	-	-	-	-	-	-	-	-	-	-
	14:50		Middle	1.5	27.50	27.50	27.5	8.18	8.18	8.2	31.14	31.14	31.1	70.5	71.6	71.1	4.67	4.74	4.71
	-		Bottom	-	-	-	-	-	-	-	-	-	-	-	-	-	-	-	-
24/10/2015	-	Fine	Surface	-	-	-	-	-	-	-	-	-	-	-	-	-	-	-	-
	16:10		Middle	1.5	27.60	27.60	27.6	7.99	7.99	8.0	29.27	29.27	29.3	60.0	59.8	59.9	4.02	4.00	4.01
	-		Bottom	-	-	-	-	-	-	-	-	-	-	-	-	-	-	-	-
26/10/2015	17:40	Fine	Surface	1.0	26.30	26.30	26.3	8.29	8.29	8.3	30.24	30.24	30.2	62.9	61.9	62.4	4.28	4.21	4.25
	-		Middle	2.0	-	-	-	-	-	-	-	-	-	-	-	-	-	-	-
	17:42		Bottom	3.0	26.40	26.40	26.4	8.25	8.25	8.3	30.14	30.14	30.1	68.9	68.8	68.9	4.69	4.68	4.69

Remarks:
Single underline denotes exceedance over Action Level.
Double underline denotes exceedance over Limit Level.



**Water Monitoring Result at Ex-WPCWA SW - South-western corners of ex-Public Cargo Works Area
Mid-Flood Tide**

Date	Time	Weater Condition	Sampling Depth		Water Temperature			pH			Salinity			DO Saturation			DO		
					°C			-			ppt			%			mg/L		
					Value	Average		Value	Average		Value	Average		Value	Average		Value	Average	
28/9/2015	-	Sunny	Surface	-	-	-	-	-	-	-	-	-	-	-	-	-	-	-	-
	18:20		Middle	1.0	28.30	28.30	28.3	8.21	8.21	8.2	24.37	24.37	24.4	60.5	60.0	60.3	4.32	4.28	4.30
	-		Bottom	-	-	-	-	-	-	-	-	-	-	-	-	-	-	-	-
30/9/2015	-	Cloudy	Surface	-	-	-	-	-	-	-	-	-	-	-	-	-	-	-	-
	19:38		Middle	1.0	28.40	28.40	28.4	8.22	8.22	8.2	28.82	28.82	28.8	63.7	63.0	63.4	4.10	4.08	4.09
	-		Bottom	-	-	-	-	-	-	-	-	-	-	-	-	-	-	-	-

Remarks:
 Single underline denotes exceedance over Action Level.
 Double underline denotes exceedance over Limit Level.



**Water Monitoring Result at Ex-WPCWA SW - South-western corners of ex-Public Cargo Works Area
Mid-Flood Tide**

Date	Time	Weather Condition	Sampling Depth		Water Temperature			pH			Salinity		DO Saturation		DO				
					°C			-		ppt		%		mg/L					
			m	Value	Average	Value	Average	Value	Average	Value	Average	Value	Average						
2/10/2015	-	Fine	Surface	-	-	-	-	-	-	-	-	-	-	-	-	-	-	-	
	10:30		Middle	1.0	28.50	28.50	28.5	8.28	8.28	8.3	22.47	22.47	22.5	44.9	44.5	44.7	3.08	3.05	<u>3.07</u>
	-		Bottom	-	-	-	-	-	-	-	-	-	-	-	-	-	-	-	-
6/10/2015	-	Cloudy	Surface	-	-	-	-	-	-	-	-	-	-	-	-	-	-	-	
	16:30		Middle	1.5	27.70	27.70	27.7	8.27	8.27	8.3	30.23	30.23	30.2	71.2	71.0	71.1	4.74	4.72	4.73
	-		Bottom	-	-	-	-	-	-	-	-	-	-	-	-	-	-	-	-
8/10/2015	-	Fine	Surface	-	-	-	-	-	-	-	-	-	-	-	-	-	-	-	
	16:01		Middle	1.0	28.40	28.40	28.4	8.23	8.23	8.2	27.98	27.98	28.0	55.5	57.0	56.3	3.70	3.80	<u>3.75</u>
	-		Bottom	-	-	-	-	-	-	-	-	-	-	-	-	-	-	-	-
10/10/2015	-	Cloudy	Surface	-	-	-	-	-	-	-	-	-	-	-	-	-	-	-	
	16:46		Middle	1.0	27.30	27.30	27.3	8.31	8.31	8.3	20.48	20.48	20.5	44.2	44.5	44.4	3.13	3.14	<u>3.14</u>
	-		Bottom	-	-	-	-	-	-	-	-	-	-	-	-	-	-	-	-
12/10/2015	-	Cloudy	Surface	-	-	-	-	-	-	-	-	-	-	-	-	-	-	-	
	16:35		Middle	1.0	26.80	26.80	26.8	8.22	8.22	8.2	31.28	31.28	31.3	64.3	65.3	64.8	4.32	4.38	4.35
	-		Bottom	-	-	-	-	-	-	-	-	-	-	-	-	-	-	-	-
14/10/2015	-	Fine	Surface	-	-	-	-	-	-	-	-	-	-	-	-	-	-	-	
	18:30		Middle	1.0	25.90	25.90	25.9	8.16	8.16	8.2	16.97	16.97	17.0	55.9	57.4	56.7	4.18	4.26	4.22
	-		Bottom	-	-	-	-	-	-	-	-	-	-	-	-	-	-	-	-
16/10/2015	-	Fine	Surface	-	-	-	-	-	-	-	-	-	-	-	-	-	-	-	
	14:56		Middle	1.5	26.90	26.90	26.9	8.36	8.36	8.4	17.68	17.68	17.7	36.3	36.0	36.2	2.62	2.60	<u>2.61</u>
	-		Bottom	-	-	-	-	-	-	-	-	-	-	-	-	-	-	-	-
20/10/2015	-	Fine	Surface	-	-	-	-	-	-	-	-	-	-	-	-	-	-	-	
	15:05		Middle	1.5	27.20	27.20	27.2	8.22	8.22	8.2	31.58	31.58	31.6	72.0	71.6	71.8	4.79	4.76	4.78
	-		Bottom	-	-	-	-	-	-	-	-	-	-	-	-	-	-	-	-
22/10/2015	-	Fine	Surface	-	-	-	-	-	-	-	-	-	-	-	-	-	-	-	
	14:25		Middle	1.0	27.30	27.30	27.3	8.27	8.27	8.3	24.65	24.65	24.7	46.0	46.0	46.0	3.17	3.17	<u>3.17</u>
	-		Bottom	-	-	-	-	-	-	-	-	-	-	-	-	-	-	-	-
24/10/2015	-	Fine	Surface	-	-	-	-	-	-	-	-	-	-	-	-	-	-	-	
	15:50		Middle	1.5	27.20	27.20	27.2	8.33	8.33	8.3	12.88	12.88	12.9	36.5	37.4	37.0	2.70	2.77	<u>2.74</u>
	-		Bottom	-	-	-	-	-	-	-	-	-	-	-	-	-	-	-	-
26/10/2015	-	Fine	Surface	-	-	-	-	-	-	-	-	-	-	-	-	-	-	-	
	17:15		Middle	1.0	26.20	26.20	26.2	8.25	8.25	8.3	20.95	20.95	21.0	32.2	31.7	32.0	2.31	2.28	<u>2.30</u>
	-		Bottom	-	-	-	-	-	-	-	-	-	-	-	-	-	-	-	-

Remarks:
Single underline denotes exceedance over Action Level.
Double underline denotes exceedance over Limit Level.



**Water Monitoring Result at Ex-WPCWA SE - South-eastern corners of ex-Public Cargo Works Area
Mid-Flood Tide**

Date	Time	Weater Condition	Sampling Depth		Water Temperature				pH		Salinity		DO Saturation		DO		
					°C				-		ppt		%		mg/L		
					Value	Average	Value	Average	Value	Average	Value	Average	Value	Average			
28/9/2015	-	Sunny	Surface	-	-	-	-	-	-	-	-	-	-	-	-	-	-
	-		Middle	-	-	-	-	-	-	-	-	-	-	-	-	-	-
	-		Bottom	-	-	-	-	-	-	-	-	-	-	-	-	-	-
30/9/2015	-	Cloudy	Surface	-	-	-	-	-	-	-	-	-	-	-	-	-	-
	-		Middle	-	-	-	-	-	-	-	-	-	-	-	-	-	-
	-		Bottom	-	-	-	-	-	-	-	-	-	-	-	-	-	-

Remarks:
 Single underline denotes exceedance over Action Level.
 Double underline denotes exceedance over Limit Level.



**Water Monitoring Result at Ex-WPCWA SE - South-eastern corners of ex-Public Cargo Works Area
Mid-Flood Tide**

Date	Time	Weather Condition	Sampling Depth		Water Temperature			pH		Salinity		DO Saturation		DO			
					°C			-		ppt		%		mg/L			
			m	Value	Average	Value	Average	Value	Average	Value	Average	Value	Average				
2/10/2015	-	Fine	Surface	-	-	-	-	-	-	-	-	-	-	-	-	-	-
	-		Middle	-	-	-	-	-	-	-	-	-	-	-	-	-	-
	-		Bottom	-	-	-	-	-	-	-	-	-	-	-	-	-	-
6/10/2015	-	Cloudy	Surface	-	-	-	-	-	-	-	-	-	-	-	-	-	-
	-		Middle	-	-	-	-	-	-	-	-	-	-	-	-	-	-
	-		Bottom	-	-	-	-	-	-	-	-	-	-	-	-	-	-
8/10/2015	-	Fine	Surface	-	-	-	-	-	-	-	-	-	-	-	-	-	-
	-		Middle	-	-	-	-	-	-	-	-	-	-	-	-	-	-
	-		Bottom	-	-	-	-	-	-	-	-	-	-	-	-	-	-
10/10/2015	-	Cloudy	Surface	-	-	-	-	-	-	-	-	-	-	-	-	-	-
	-		Middle	-	-	-	-	-	-	-	-	-	-	-	-	-	-
	-		Bottom	-	-	-	-	-	-	-	-	-	-	-	-	-	-
12/10/2015	-	Cloudy	Surface	-	-	-	-	-	-	-	-	-	-	-	-	-	-
	-		Middle	-	-	-	-	-	-	-	-	-	-	-	-	-	-
	-		Bottom	-	-	-	-	-	-	-	-	-	-	-	-	-	-
14/10/2015	-	Fine	Surface	-	-	-	-	-	-	-	-	-	-	-	-	-	-
	-		Middle	-	-	-	-	-	-	-	-	-	-	-	-	-	-
	-		Bottom	-	-	-	-	-	-	-	-	-	-	-	-	-	-
16/10/2015	-	Fine	Surface	-	-	-	-	-	-	-	-	-	-	-	-	-	-
	-		Middle	-	-	-	-	-	-	-	-	-	-	-	-	-	-
	-		Bottom	-	-	-	-	-	-	-	-	-	-	-	-	-	-
20/10/2015	-	Fine	Surface	-	-	-	-	-	-	-	-	-	-	-	-	-	-
	-		Middle	-	-	-	-	-	-	-	-	-	-	-	-	-	-
	-		Bottom	-	-	-	-	-	-	-	-	-	-	-	-	-	-
22/10/2015	-	Fine	Surface	-	-	-	-	-	-	-	-	-	-	-	-	-	-
	-		Middle	-	-	-	-	-	-	-	-	-	-	-	-	-	-
	-		Bottom	-	-	-	-	-	-	-	-	-	-	-	-	-	-
24/10/2015	-	Fine	Surface	-	-	-	-	-	-	-	-	-	-	-	-	-	-
	-		Middle	-	-	-	-	-	-	-	-	-	-	-	-	-	-
	-		Bottom	-	-	-	-	-	-	-	-	-	-	-	-	-	-
26/10/2015	-	Fine	Surface	-	-	-	-	-	-	-	-	-	-	-	-	-	-
	-		Middle	-	-	-	-	-	-	-	-	-	-	-	-	-	-
	-		Bottom	-	-	-	-	-	-	-	-	-	-	-	-	-	-

Remarks:
 Single underline denotes exceedance over Action Level.
 Double underline denotes exceedance over Limit Level.



**Water Monitoring Result at C6 - Excelsior Hotel
Mid-Ebb Tide**

Date	Time	Weater Condition	Sampling Depth		Water Temperature			pH			Salinity			DO Saturation			DO		
					°C			-			ppt			%			mg/L		
					Value	Average		Value	Average		Value	Average		Value	Average		Value	Average	
28/9/2015	-	Sunny	Surface	-	-	-	-	-	-	-	-	-	-	-	-	-	-	-	-
	10:31		Middle	2	29.60	29.60	29.6	7.95	7.95	8.0	30.39	30.39	30.4	76.3	77.2	76.8	4.90	4.96	4.93
	-		Bottom	-	-	-	-	-	-	-	-	-	-	-	-	-	-	-	-
30/9/2015	11:37	Fine	Surface	1	29.30	29.30	29.3	8.25	8.25	8.3	30.40	30.40	30.4	60.3	60.8	60.6	3.91	3.93	3.92
	-		Middle	2	-	-	-	-	-	-	-	-	-	-	-	-	-	-	-
	11:35		Bottom	3	29.30	29.30	29.3	8.26	8.26	8.3	30.84	30.84	30.8	80.5	80.9	80.7	5.19	5.21	5.20

Remarks:
 Single underline denotes exceedance over Action Level.
 Double underline denotes exceedance over Limit Level.



**Water Monitoring Result at C6 - Excelsior Hotel
Mid-Ebb Tide**

Date	Time	Weater Condition	Sampling Depth		Water Temperature			pH			Salinity		DO Saturation		DO				
					°C			-			ppt		%		mg/L				
			m	Value	Average	Value	Average	Value	Average	Value	Average	Value	Average	Value	Average				
2/10/2015	-	Fine	Surface	-	-	-	-	-	-	-	-	-	-	-	-	-	-	-	
	16:05		Middle	1.5	28.40	28.40	28.4	7.88	7.88	7.9	29.22	29.22	29.2	68.8	67.7	68.3	4.53	4.46	4.50
	-		Bottom	-	-	-	-	-	-	-	-	-	-	-	-	-	-	-	-
6/10/2015	-	Cloudy	Surface	-	-	-	-	-	-	-	-	-	-	-	-	-	-	-	-
	9:55		Middle	1.5	27.70	27.70	27.7	8.20	8.20	8.2	27.96	27.96	28.0	62.9	61.4	62.2	4.24	4.14	4.19
	-		Bottom	-	-	-	-	-	-	-	-	-	-	-	-	-	-	-	-
8/10/2015	-	Fine	Surface	-	-	-	-	-	-	-	-	-	-	-	-	-	-	-	-
	10:42		Middle	1.5	28.10	28.10	28.1	8.19	8.19	8.2	29.05	29.05	29.1	46.0	45.0	45.5	3.06	2.99	<u>3.03</u>
	-		Bottom	-	-	-	-	-	-	-	-	-	-	-	-	-	-	-	-
10/10/2015	11:30	Fine	Surface	1.0	27.60	27.60	27.6	8.21	8.21	8.2	30.30	30.30	30.3	69.5	69.3	69.4	4.63	4.61	4.62
	-		Middle	2.0	-	-	-	-	-	-	-	-	-	-	-	-	-	-	-
	11:32		Bottom	3.0	27.50	27.50	27.5	8.21	8.21	8.2	30.92	30.92	30.9	82.3	82.4	82.4	5.47	5.48	5.48
12/10/2015	12:12	Cloudy	Surface	1.0	26.40	26.40	26.4	8.22	8.22	8.2	29.99	29.99	30.0	48.8	48.1	48.5	3.32	3.28	3.30
	-		Middle	2.0	-	-	-	-	-	-	-	-	-	-	-	-	-	-	-
	12:14		Bottom	3.0	26.30	26.30	26.3	8.21	8.21	8.2	28.96	28.96	29.0	73.7	73.0	73.4	5.06	5.01	5.04
14/10/2015	14:55	Fine	Surface	1.0	27.30	27.30	27.3	8.21	8.21	8.2	27.00	27.00	27.0	51.7	51.7	51.7	3.52	3.52	3.52
	-		Middle	-	-	-	-	-	-	-	-	-	-	-	-	-	-	-	-
	14:57		Bottom	3.0	27.30	27.30	27.3	8.13	8.13	8.1	30.74	30.74	30.7	75.7	78.4	77.1	5.05	5.24	5.15
16/10/2015	9:52	Fine	Surface	1.0	26.90	26.90	26.9	8.21	8.21	8.2	31.05	31.05	31.1	72.0	72.9	72.5	4.82	4.88	4.85
	-		Middle	-	-	-	-	-	-	-	-	-	-	-	-	-	-	-	-
	9:54		Bottom	3.0	26.80	26.80	26.8	8.21	8.21	8.2	31.12	31.12	31.1	86.0	87.8	86.9	5.76	5.82	5.79
20/10/2015	-	Fine	Surface	-	-	-	-	-	-	-	-	-	-	-	-	-	-	-	
	2:11		Middle	1.5	25.40	25.40	25.4	8.11	8.11	8.1	30.18	30.18	30.2	65.8	66.1	66.0	4.55	4.58	4.57
	-		Bottom	-	-	-	-	-	-	-	-	-	-	-	-	-	-	-	-
22/10/2015	-	Cloudy	Surface	-	-	-	-	-	-	-	-	-	-	-	-	-	-	-	
	3:50		Middle	1.5	26.10	26.10	26.1	8.27	8.27	8.3	30.09	30.09	30.1	65.2	64.8	65.0	4.45	4.43	4.44
	-		Bottom	-	-	-	-	-	-	-	-	-	-	-	-	-	-	-	-
24/10/2015	-	Fine	Surface	-	-	-	-	-	-	-	-	-	-	-	-	-	-	-	
	10:35		Middle	1.5	27.50	27.50	27.5	8.15	8.15	8.2	31.23	31.23	31.2	71.7	75.2	73.5	4.75	4.99	4.87
	-		Bottom	-	-	-	-	-	-	-	-	-	-	-	-	-	-	-	-
26/10/2015	-	Cloudy	Surface	-	-	-	-	-	-	-	-	-	-	-	-	-	-	-	
	12:25		Middle	1.5	26.50	26.50	26.5	8.00	8.00	8.0	28.52	28.52	28.5	72.5	73.5	73.0	4.98	5.06	5.02
	-		Bottom	-	-	-	-	-	-	-	-	-	-	-	-	-	-	-	-

Remarks:
Single underline denotes exceedance over Action Level.
Double underline denotes exceedance over Limit Level.



**Water Monitoring Result at Ex-WPCWA SW - South-western corners of ex-Public Cargo Works Area
Mid-Ebb Tide**

Date	Time	Weater Condition	Sampling Depth		Water Temperature			pH			Salinity			DO Saturation			DO		
					°C			-			ppt			%			mg/L		
					Value	Average		Value	Average		Value	Average		Value	Average		Value	Average	
28/9/2015	-	Sunny	Surface	-	-	-	-	-	-	-	-	-	-	-	-	-	-	-	-
	11:04		Middle	1.5	29.60	29.60	29.6	7.97	7.97	8.0	27.08	27.08	27.1	58.9	59.9	59.4	3.85	3.93	3.89
	-		Bottom	-	-	-	-	-	-	-	-	-	-	-	-	-	-	-	-
30/9/2015	-	Fine	Surface	-	-	-	-	-	-	-	-	-	-	-	-	-	-	-	-
	15:45		Middle	1.5	28.70	28.70	28.7	8.20	8.20	8.2	16.92	19.62	18.3	29.7	30.1	29.9	2.09	2.13	<u>2.11</u>
	-		Bottom	-	-	-	-	-	-	-	-	-	-	-	-	-	-	-	-

Remarks:
Single underline denotes exceedance over Action Level.
Double underline denotes exceedance over Limit Level.



**Water Monitoring Result at Ex-WPCWA SW - South-western corners of ex-Public Cargo Works Area
Mid-Ebb Tide**

Date	Time	Weater Condition	Sampling Depth		Water Temperature			pH		Salinity		DO Saturation		DO					
					°C			-		ppt		%		mg/L					
			m	Value	Average	Value	Average	Value	Average	Value	Average	Value	Average	Value	Average				
2/10/2015	-	Fine	Surface	-	-	-	-	-	-	-	-	-	-	-	-	-	-	-	
	15:50		Middle	1.0	28.10	28.10	28.1	8.39	8.39	8.4	10.47	10.47	10.5	30.9	31.0	31.0	2.28	2.29	<u>2.29</u>
	-		Bottom	-	-	-	-	-	-	-	-	-	-	-	-	-	-	-	-
6/10/2015	-	z	Surface	-	-	-	-	-	-	-	-	-	-	-	-	-	-	-	-
	9:35		Middle	1.5	26.50	26.50	26.5	8.74	8.74	8.7	5.04	5.04	5.0	50.8	50.5	50.7	3.97	3.94	3.96
	-		Bottom	-	-	-	-	-	-	-	-	-	-	-	-	-	-	-	-
8/10/2015	-	Fine	Surface	-	-	-	-	-	-	-	-	-	-	-	-	-	-	-	-
	10:25		Middle	1.0	27.60	27.60	27.6	8.36	8.36	8.4	19.80	19.80	19.8	43.5	41.2	42.4	3.16	2.99	<u>3.08</u>
	-		Bottom	-	-	-	-	-	-	-	-	-	-	-	-	-	-	-	-
10/10/2015	-	Fine	Surface	-	-	-	-	-	-	-	-	-	-	-	-	-	-	-	-
	11:12		Middle	1.0	27.40	27.40	27.4	8.34	8.34	8.3	25.52	25.52	25.5	49.9	49.2	49.6	3.43	3.38	<u>3.41</u>
	-		Bottom	-	-	-	-	-	-	-	-	-	-	-	-	-	-	-	-
12/10/2015	-	Cloudy	Surface	-	-	-	-	-	-	-	-	-	-	-	-	-	-	-	-
	11:50		Middle	1.5	26.20	26.20	26.2	8.28	8.28	8.3	24.40	24.40	24.4	55.6	55.2	55.4	3.92	3.90	3.91
	-		Bottom	-	-	-	-	-	-	-	-	-	-	-	-	-	-	-	-
14/10/2015	-	Fine	Surface	-	-	-	-	-	-	-	-	-	-	-	-	-	-	-	-
	14:40		Middle	1.0	27.10	27.10	27.1	8.24	8.24	8.2	25.67	25.67	25.7	55.1	53.8	54.5	3.79	3.70	<u>3.75</u>
	-		Bottom	-	-	-	-	-	-	-	-	-	-	-	-	-	-	-	-
16/10/2015	-	Fine	Surface	-	-	-	-	-	-	-	-	-	-	-	-	-	-	-	-
	9:27		Middle	1.0	26.70	26.70	26.7	8.30	8.30	8.3	29.25	29.25	29.3	52.2	51.0	51.6	3.54	3.47	<u>3.51</u>
	-		Bottom	-	-	-	-	-	-	-	-	-	-	-	-	-	-	-	-
20/10/2015	-	Fine	Surface	-	-	-	-	-	-	-	-	-	-	-	-	-	-	-	-
	2:40		Middle	1.5	25.00	25.00	25.0	8.54	8.55	8.5	16.60	16.60	16.6	58.6	59.7	59.2	4.06	4.13	4.10
	-		Bottom	-	-	-	-	-	-	-	-	-	-	-	-	-	-	-	-
22/10/2015	-	Cloudy	Surface	-	-	-	-	-	-	-	-	-	-	-	-	-	-	-	-
	7:28		Middle	1.5	26.20	26.20	26.2	8.43	8.43	8.4	19.67	19.65	19.7	60.3	61.1	60.7	4.13	4.18	4.16
	-		Bottom	-	-	-	-	-	-	-	-	-	-	-	-	-	-	-	-
24/10/2015	-	Fine	Surface	-	-	-	-	-	-	-	-	-	-	-	-	-	-	-	-
	10:17		Middle	1.0	26.80	26.80	26.8	8.40	8.40	8.4	11.05	11.04	11.0	26.5	26.0	26.3	1.99	1.95	<u>1.97</u>
	-		Bottom	-	-	-	-	-	-	-	-	-	-	-	-	-	-	-	-
26/10/2015	-	Cloudy	Surface	-	-	-	-	-	-	-	-	-	-	-	-	-	-	-	-
	12:00		Middle	1.0	26.20	26.20	26.2	8.43	8.43	8.4	11.99	11.99	12.0	32.7	33.4	33.1	2.47	2.52	<u>2.50</u>
	-		Bottom	-	-	-	-	-	-	-	-	-	-	-	-	-	-	-	-

Remarks:
Single underline denotes exceedance over Action Level.
Double underline denotes exceedance over Limit Level.



**Water Monitoring Result at Ex-WPCWA SE - South-eastern corners of ex-Public Cargo Works Area
Mid-Ebb Tide**

Date	Time	Weather Condition	Sampling Depth		Water Temperature			pH		Salinity		DO Saturation		DO			
					°C			-		ppt		%		mg/L			
					Value	Average		Value	Average	Value	Average	Value	Average	Value	Average		
28/9/2015	-	Sunny	Surface	-	-	-	-	-	-	-	-	-	-	-	-	-	-
	-		Middle	-	-	-	-	-	-	-	-	-	-	-	-	-	-
	-		Bottom	-	-	-	-	-	-	-	-	-	-	-	-	-	-
30/9/2015	-	Fine	Surface	-	-	-	-	-	-	-	-	-	-	-	-	-	-
	-		Middle	-	-	-	-	-	-	-	-	-	-	-	-	-	-
	-		Bottom	-	-	-	-	-	-	-	-	-	-	-	-	-	-

Remarks:
 Single underline denotes exceedance over Action Level.
 Double underline denotes exceedance over Limit Level.



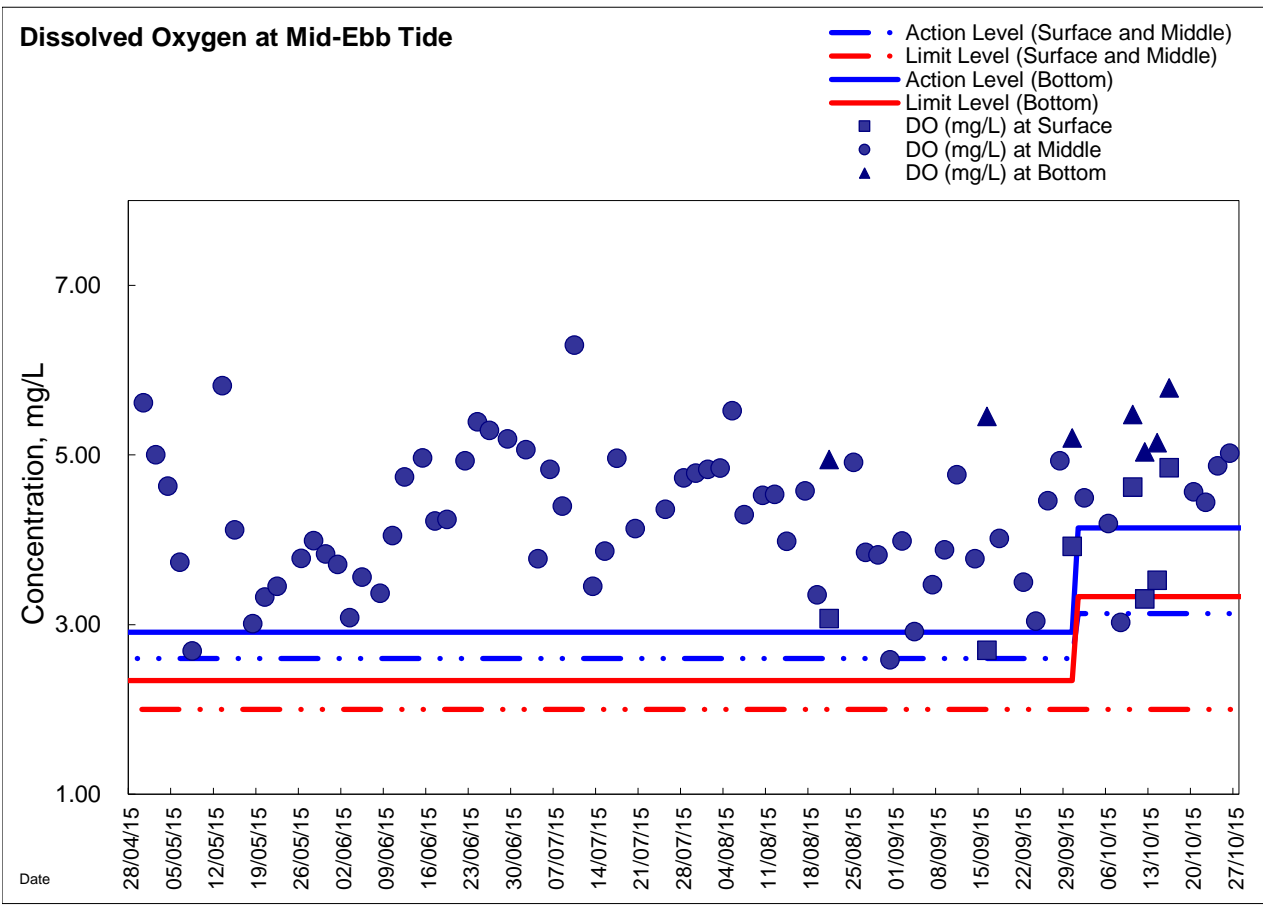
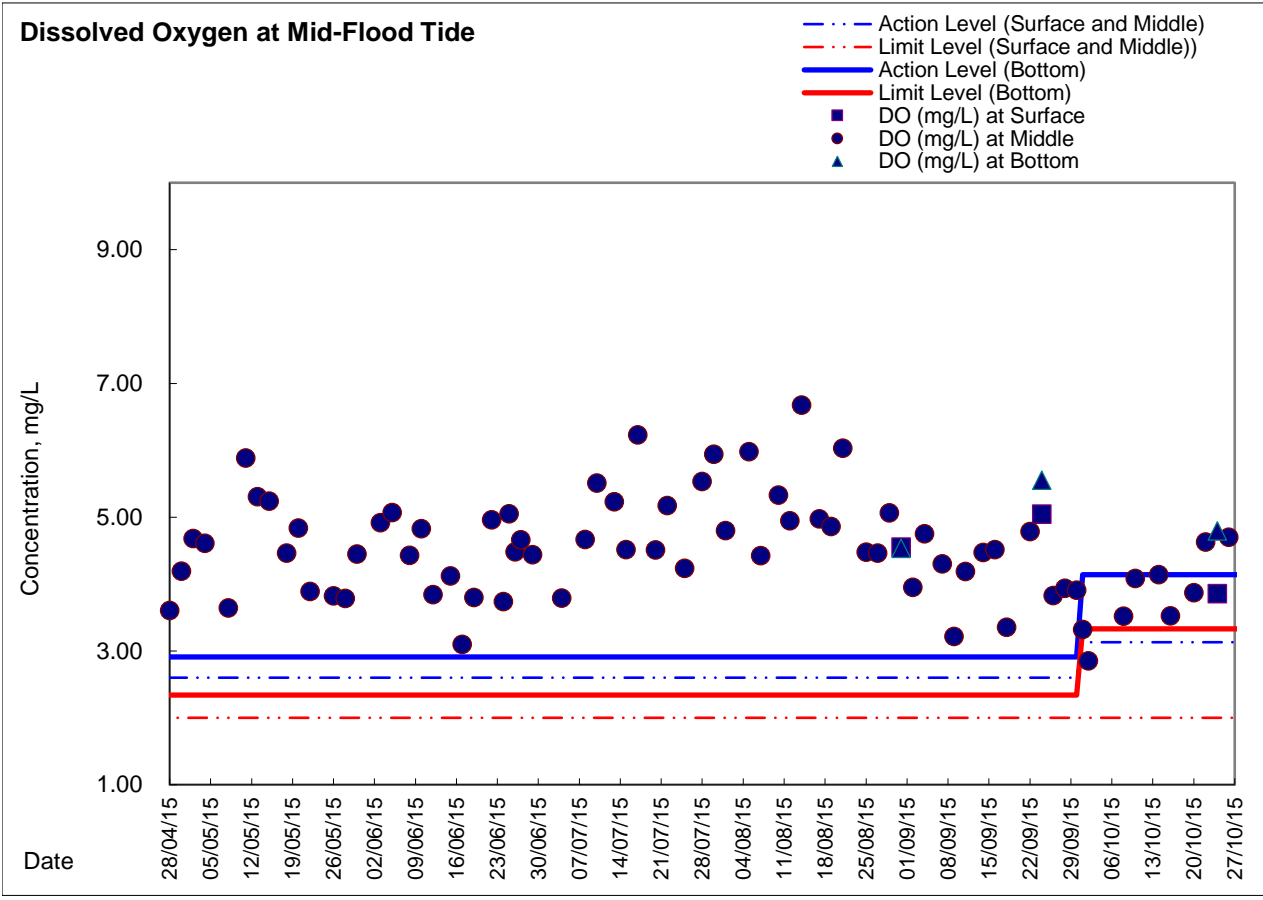
**Water Monitoring Result at Ex-WPCWA SE - South-eastern corners of ex-Public Cargo Works Area
Mid-Ebb Tide**

Date	Time	Weater Condition	Sampling Depth		Water Temperature		pH		Salinity		DO Saturation		DO		
					°C		-		ppt		%		mg/L		
			m		Value	Average	Value	Average	Value	Average	Value	Average	Value	Average	
2/10/2015	-	Fine	Surface	-	-	-	-	-	-	-	-	-	-	-	-
	-		Middle	-	-	-	-	-	-	-	-	-	-	-	-
	-		Bottom	-	-	-	-	-	-	-	-	-	-	-	-
6/10/2015	-	Cloudy	Surface	-	-	-	-	-	-	-	-	-	-	-	-
	-		Middle	-	-	-	-	-	-	-	-	-	-	-	-
	-		Bottom	-	-	-	-	-	-	-	-	-	-	-	-
8/10/2015	-	Fine	Surface	-	-	-	-	-	-	-	-	-	-	-	-
	-		Middle	-	-	-	-	-	-	-	-	-	-	-	-
	-		Bottom	-	-	-	-	-	-	-	-	-	-	-	-
10/10/2015	-	Fine	Surface	-	-	-	-	-	-	-	-	-	-	-	-
	-		Middle	-	-	-	-	-	-	-	-	-	-	-	-
	-		Bottom	-	-	-	-	-	-	-	-	-	-	-	-
12/10/2015	-	Cloudy	Surface	-	-	-	-	-	-	-	-	-	-	-	-
	-		Middle	-	-	-	-	-	-	-	-	-	-	-	-
	-		Bottom	-	-	-	-	-	-	-	-	-	-	-	-
14/10/2015	-	Fine	Surface	-	-	-	-	-	-	-	-	-	-	-	-
	-		Middle	-	-	-	-	-	-	-	-	-	-	-	-
	-		Bottom	-	-	-	-	-	-	-	-	-	-	-	-
16/10/2015	-	Fine	Surface	-	-	-	-	-	-	-	-	-	-	-	-
	-		Middle	-	-	-	-	-	-	-	-	-	-	-	-
	-		Bottom	-	-	-	-	-	-	-	-	-	-	-	-
20/10/2015	-	Fine	Surface	-	-	-	-	-	-	-	-	-	-	-	-
	-		Middle	-	-	-	-	-	-	-	-	-	-	-	-
	-		Bottom	-	-	-	-	-	-	-	-	-	-	-	-
22/10/2015	-	Cloudy	Surface	-	-	-	-	-	-	-	-	-	-	-	-
	-		Middle	-	-	-	-	-	-	-	-	-	-	-	-
	-		Bottom	-	-	-	-	-	-	-	-	-	-	-	-
24/10/2015	-	Fine	Surface	-	-	-	-	-	-	-	-	-	-	-	-
	-		Middle	-	-	-	-	-	-	-	-	-	-	-	-
	-		Bottom	-	-	-	-	-	-	-	-	-	-	-	-
26/10/2015	-	Cloudy	Surface	-	-	-	-	-	-	-	-	-	-	-	-
	-		Middle	-	-	-	-	-	-	-	-	-	-	-	-
	-		Bottom	-	-	-	-	-	-	-	-	-	-	-	-

Remarks:
 Single underline denotes exceedance over Action Level.
 Double underline denotes exceedance over Limit Level.

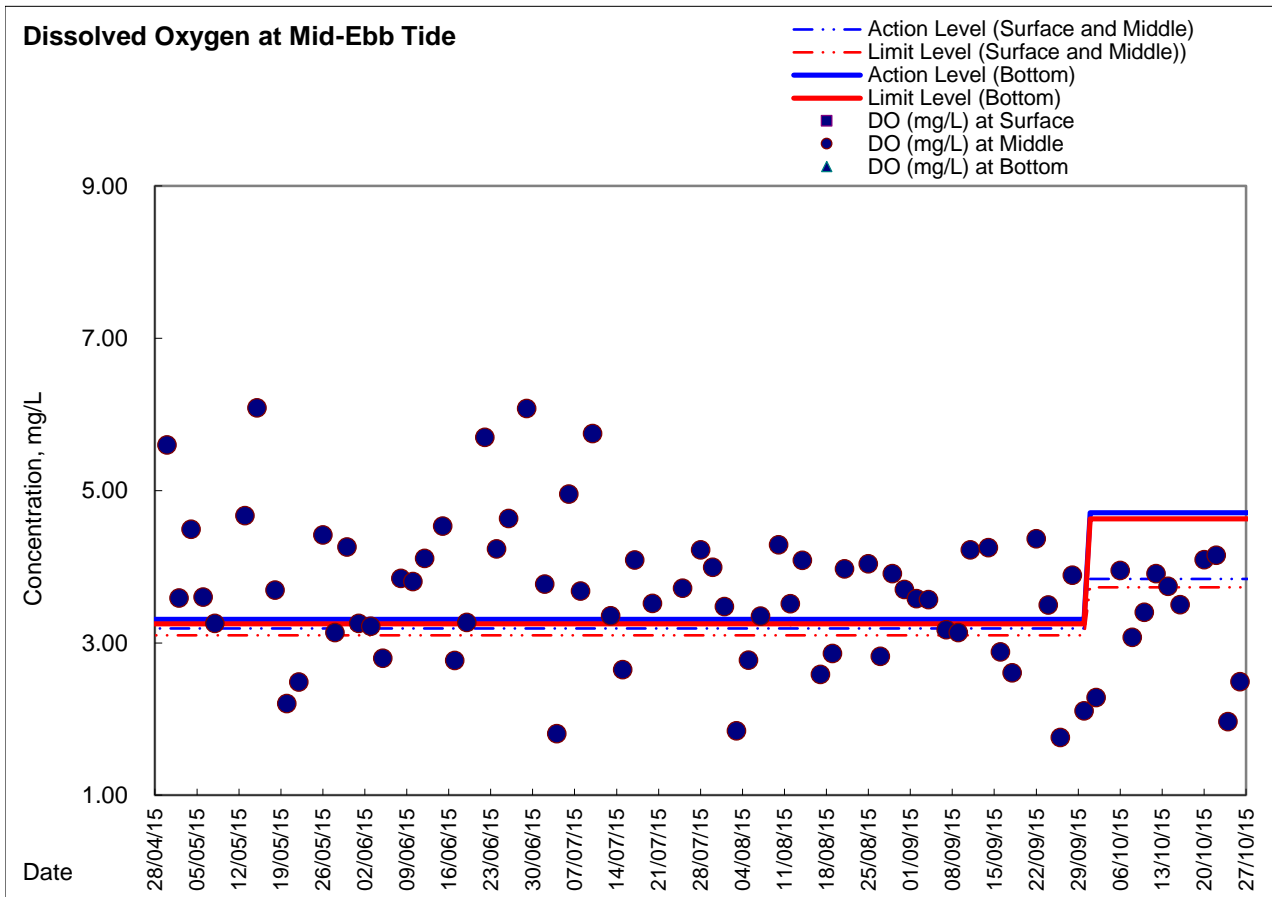
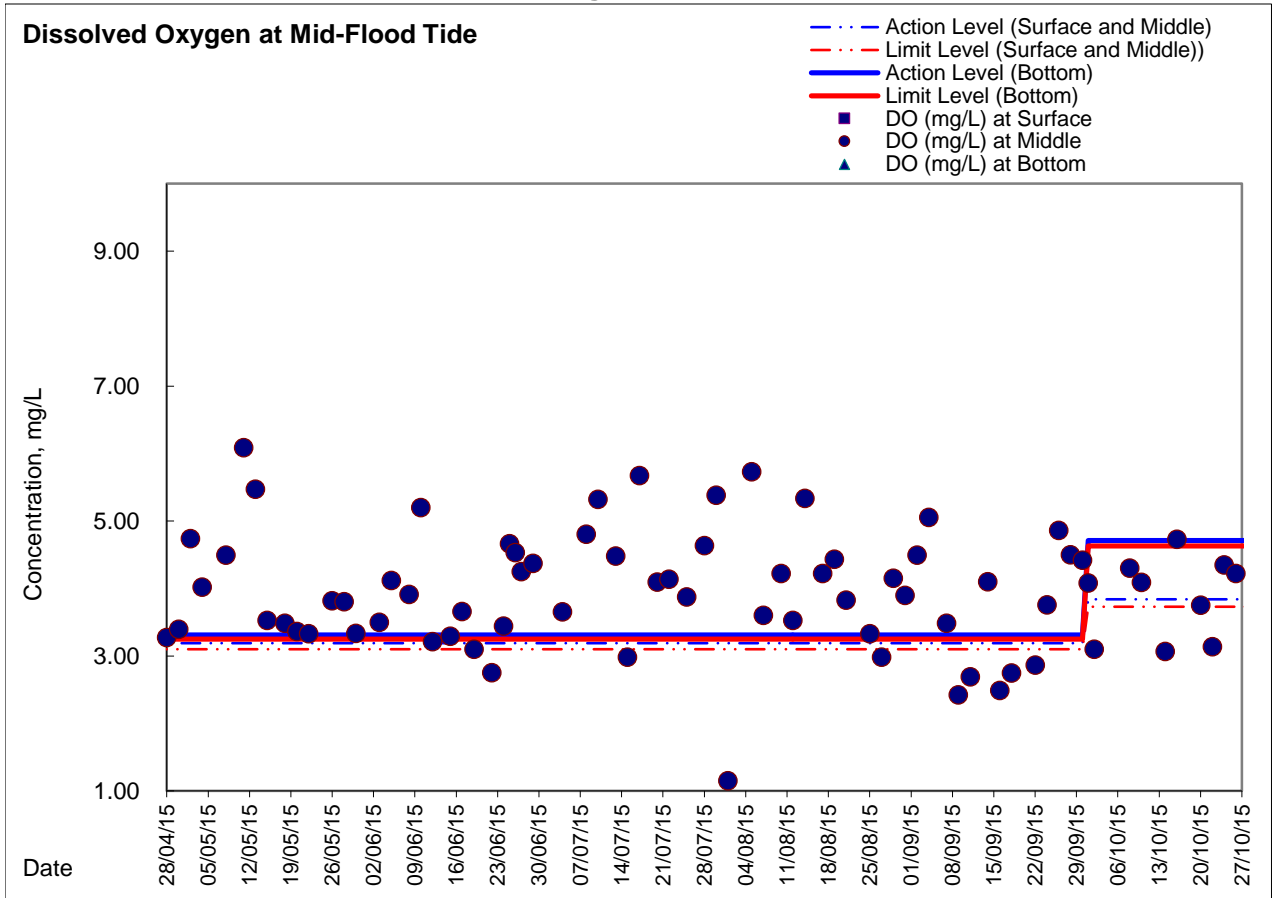


Graphic Presentation of Enhanced Water Monitoring Results (DO) at C6 - Excelsior Hotel





Graphic Presentation of Enhanced Water Monitoring Results (DO) at Ex-WPCWA SW - South-western corners of ex-Public Cargo Works Area





**Graphic Presentation of Enhanced Water Monitoring Results (DO) at Ex-WPCWA SE
- South-eastern corners of ex-Public Cargo Works Area**

